



Nukleussklerose oder Katarakt? Wann soll ich einen Patienten zur Kataraktoperation überweisen?

Ingrid Allgoewer, DECVO
Augen-Tierarztpraxis, Berlin

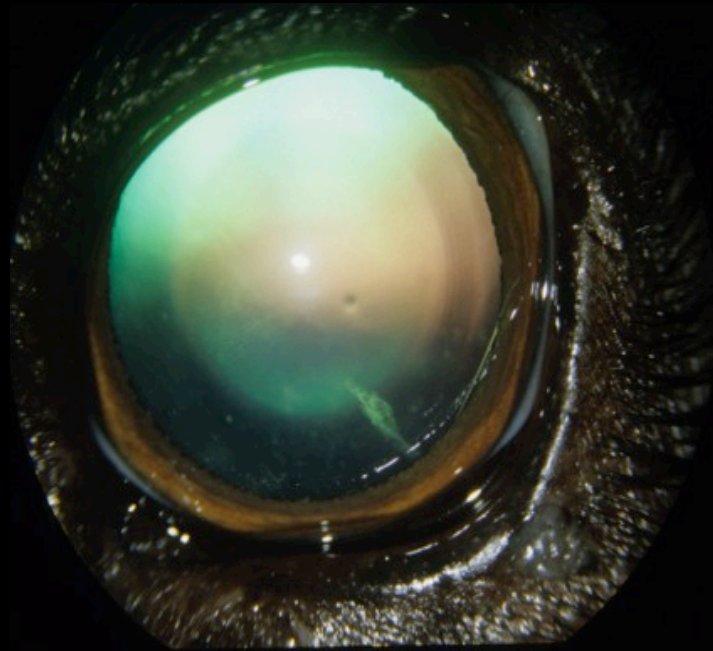


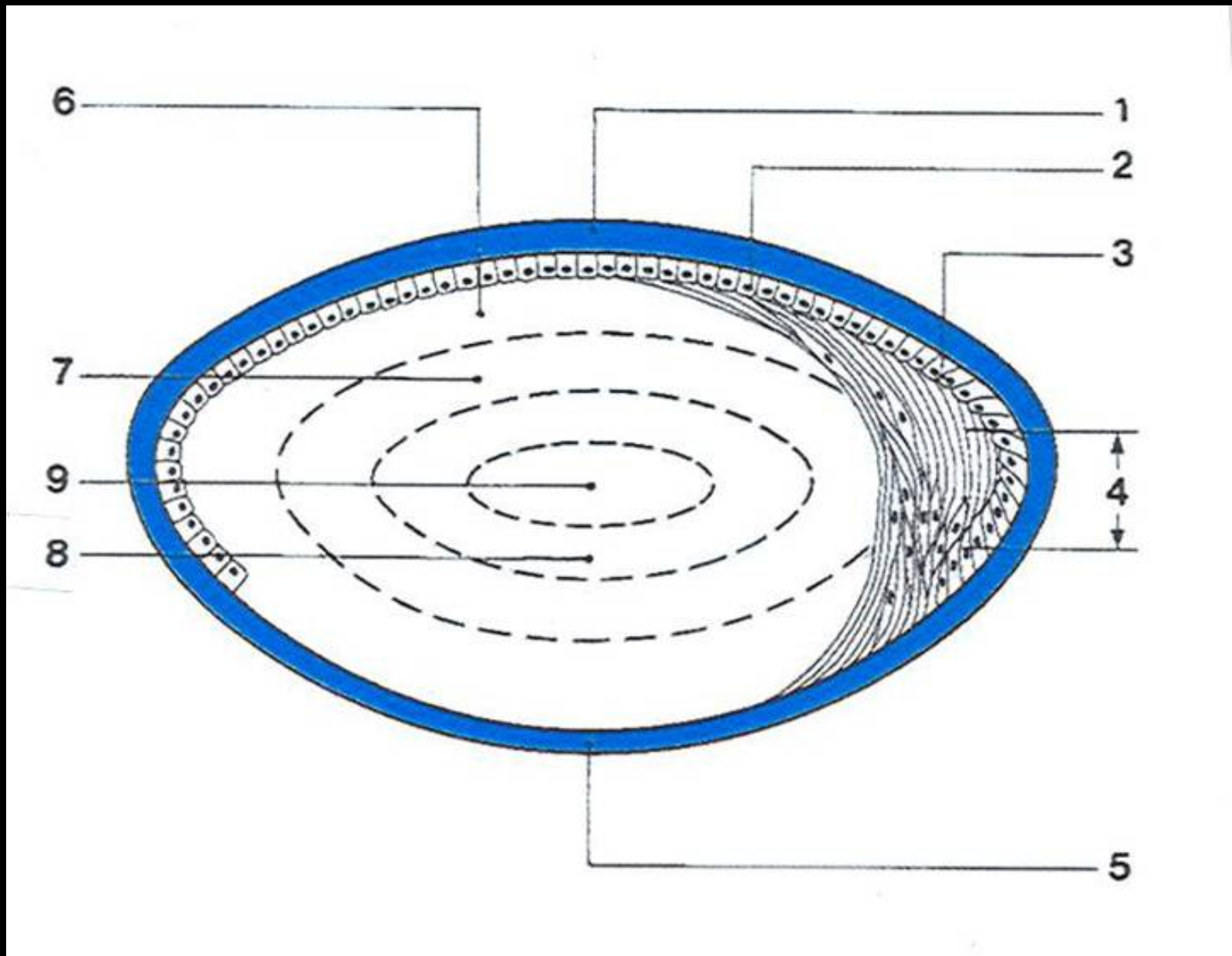
VÖK 2014

Katarakt?

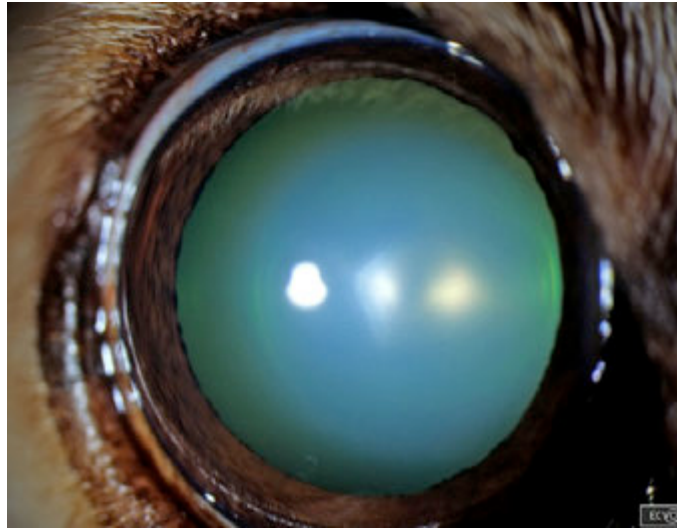


Nukleussklerose – Katarakt





Nukleussklerose



- beginnt mit 6-8 Jahren deutlich zu werden
- progressiv
- Zunahme an unlöslichen Proteinen
- führt beim Tier idR klinisch nicht zu visuellen Beeinträchtigungen

Nukleussklerose – Katarakt

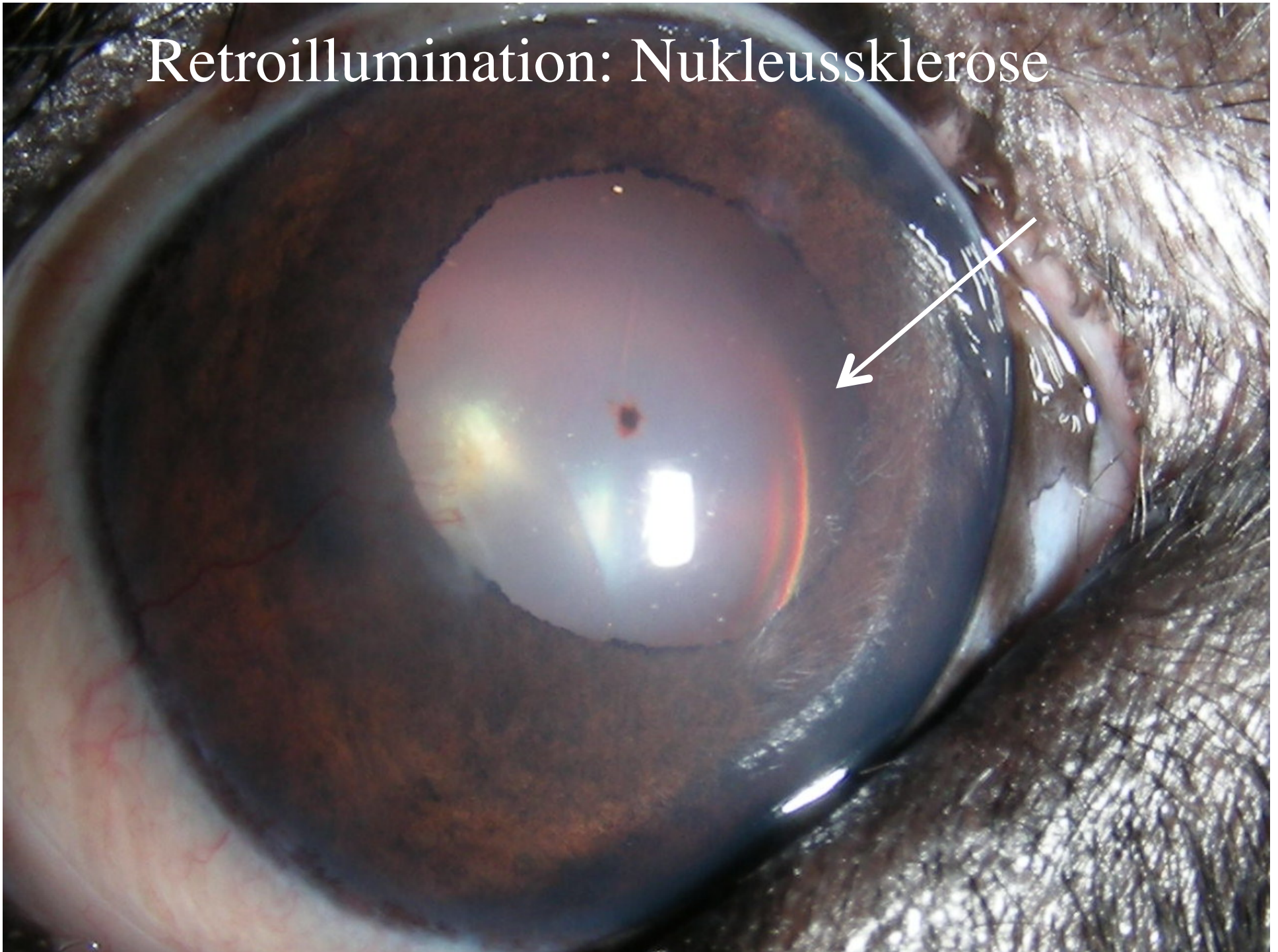
Diagnostik

1. Anamnese - Visus?
2. Spaltlampenuntersuchung- maximale Mydriasis
3. Retroillumination
4. indirekte Ophthalmoskopie

Nukleussklerose - Diagnostik

- Spaltlampe
 - Aufsicht: Nukleusrand im Fundusreflex reflektierend
 - schmaler Spalt, hohe Lichtintensität: gleichmässige Trübung nukleär
- Retroillumination
 - transparente einheitlich diffuse Trübung mit klarem Kortexsaum
- indirekte Ophthalmoskopie
 - Fundus gut einsehbar

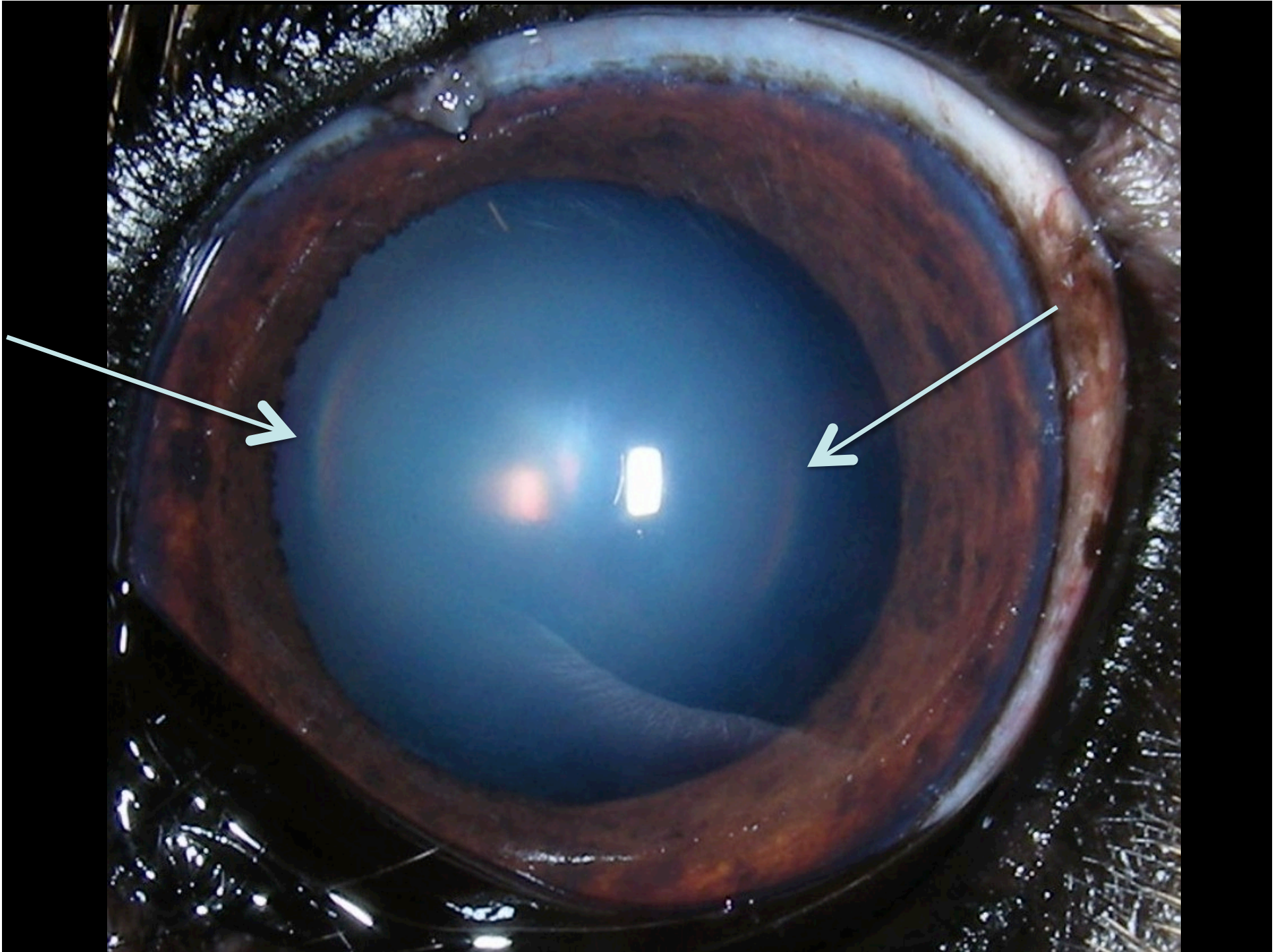
Retroillumination: Nukleussklerose



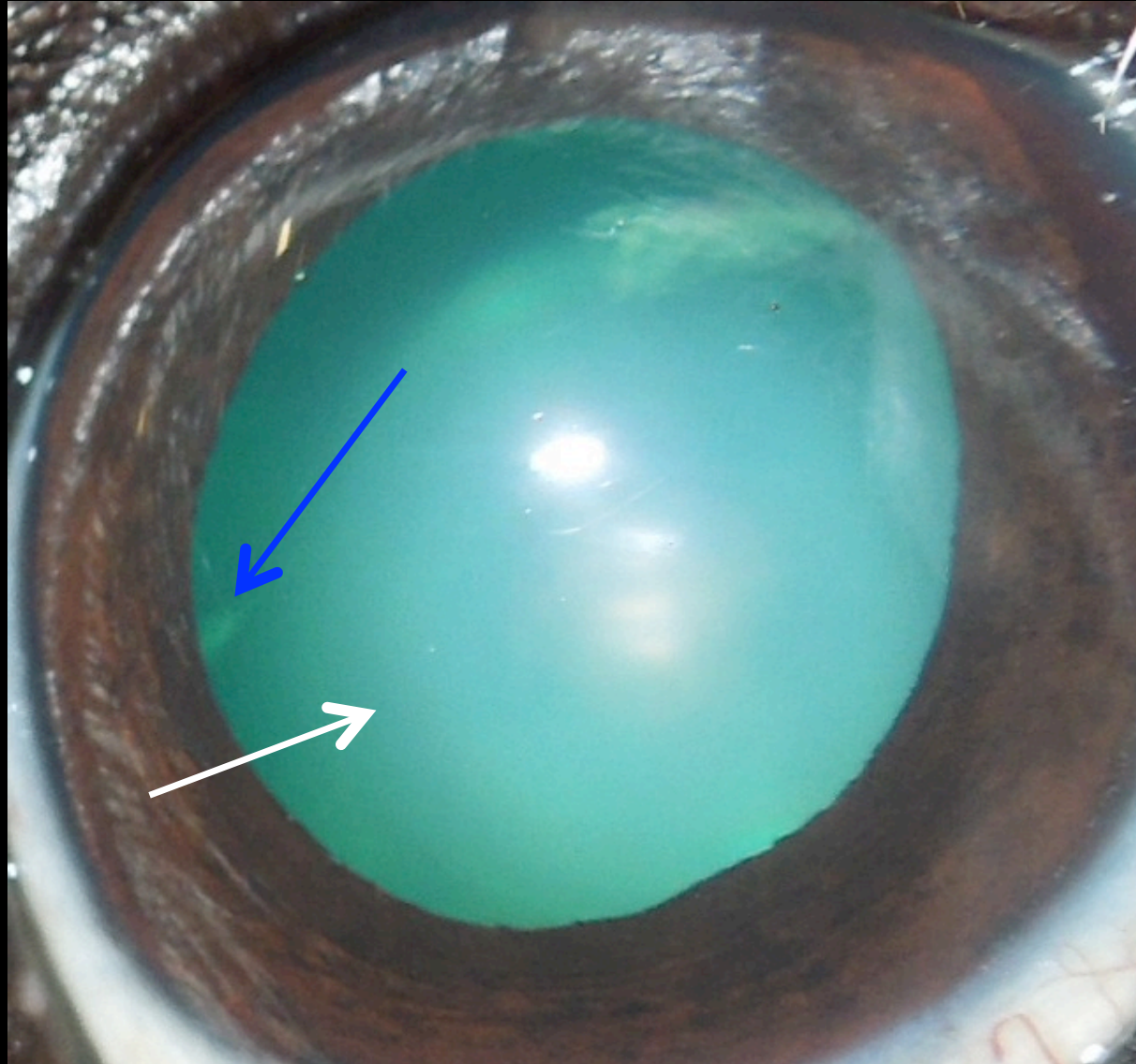


Nukleussklerose





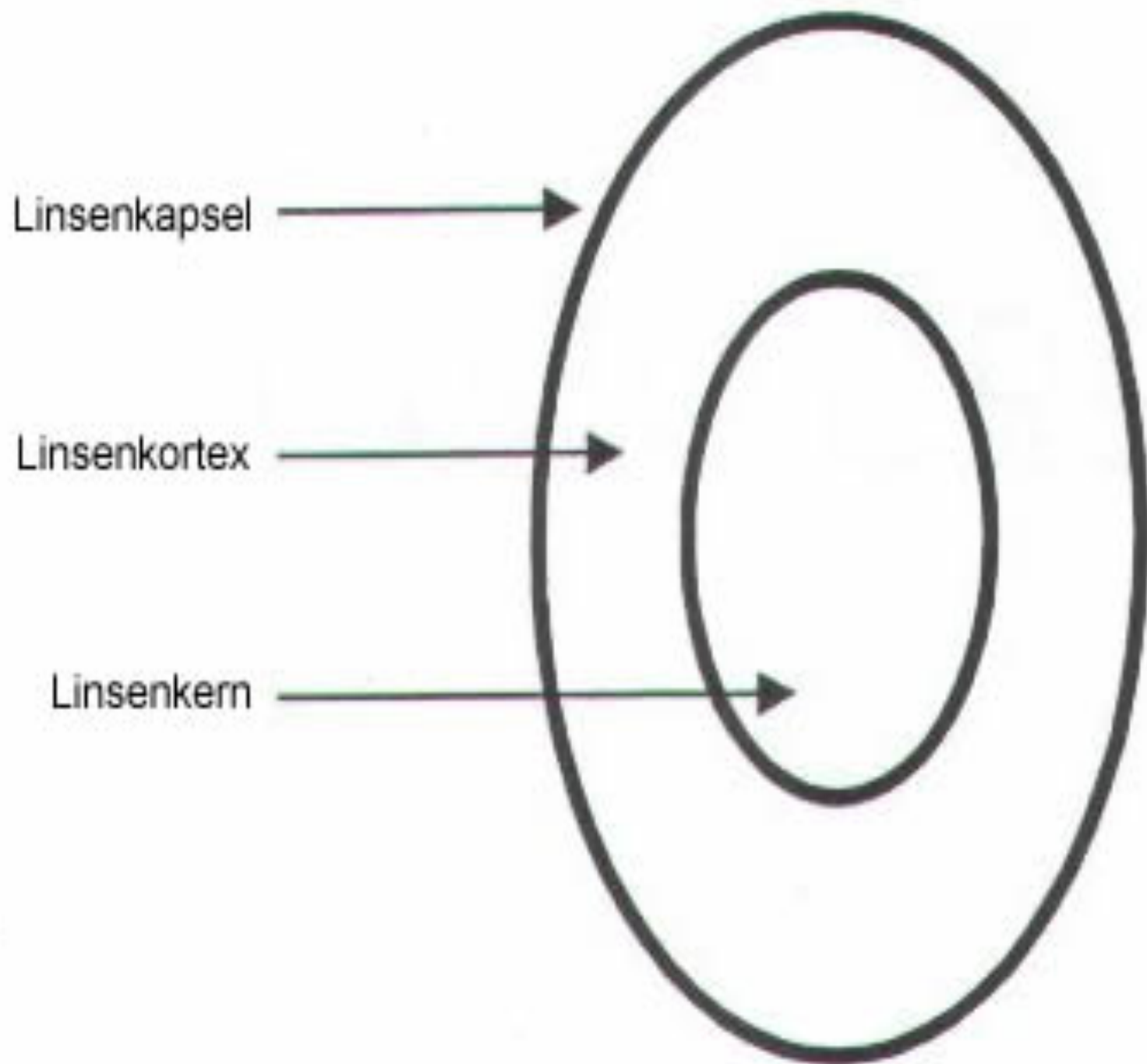
Nukleussklerose und senile Katarakt

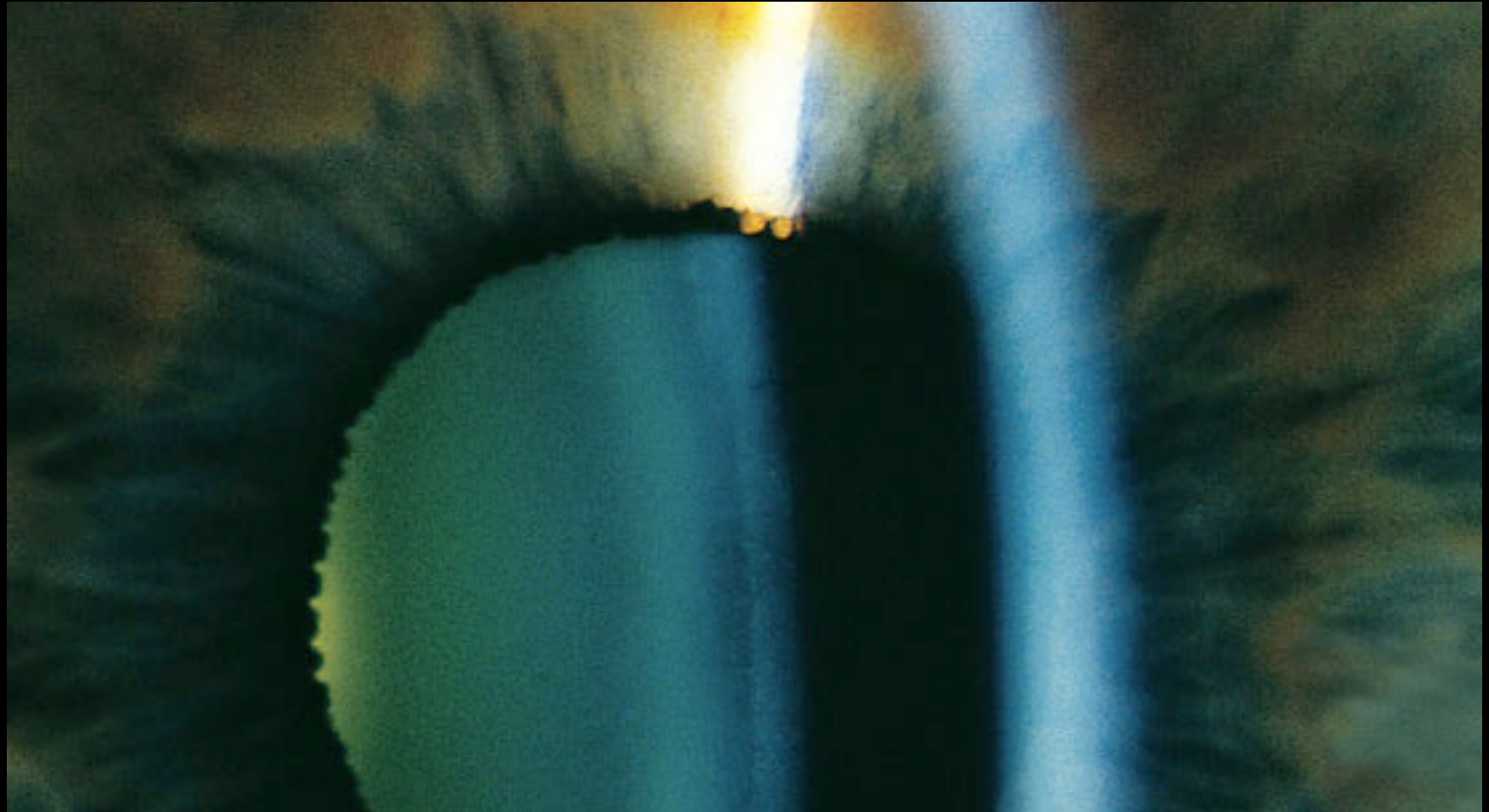


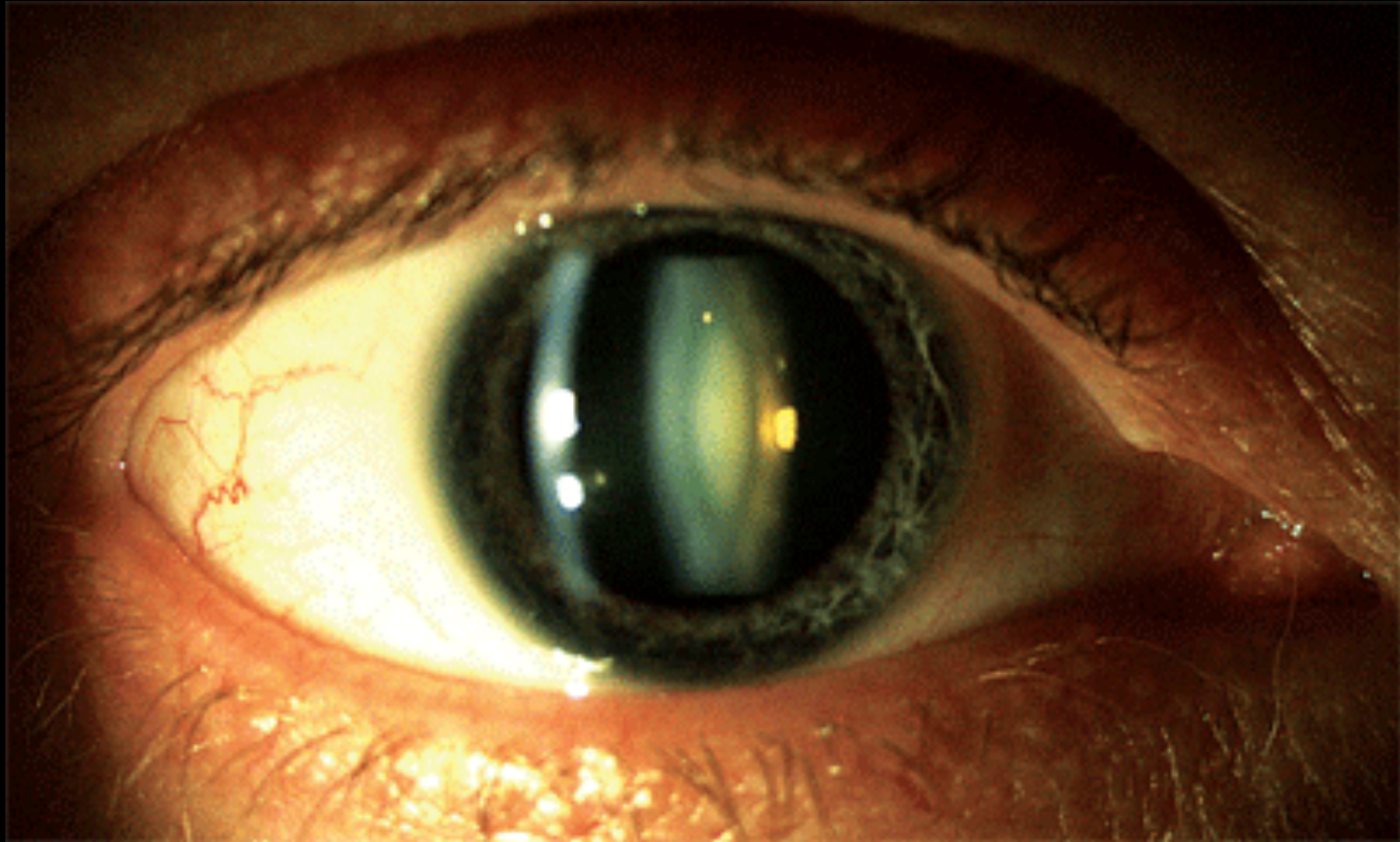
Posterior kortikale Katarakt Spaltlampen-Aufsicht



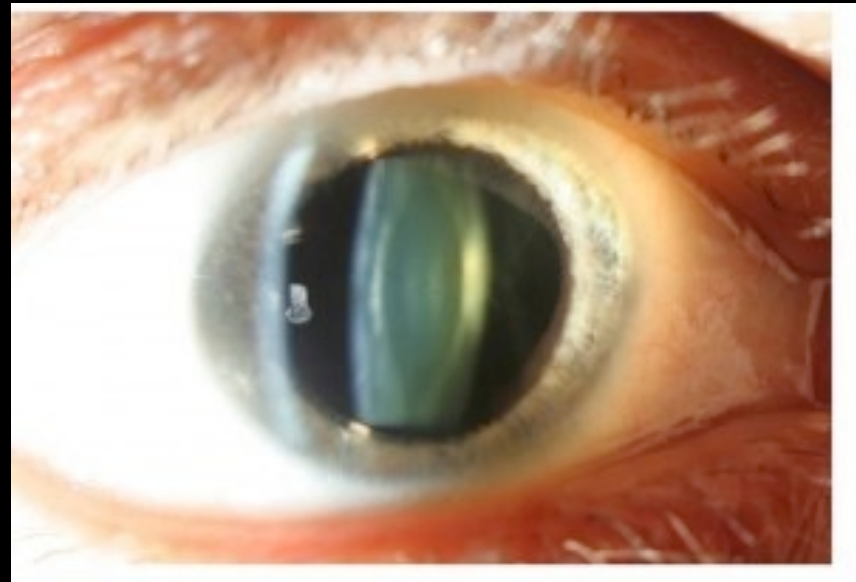




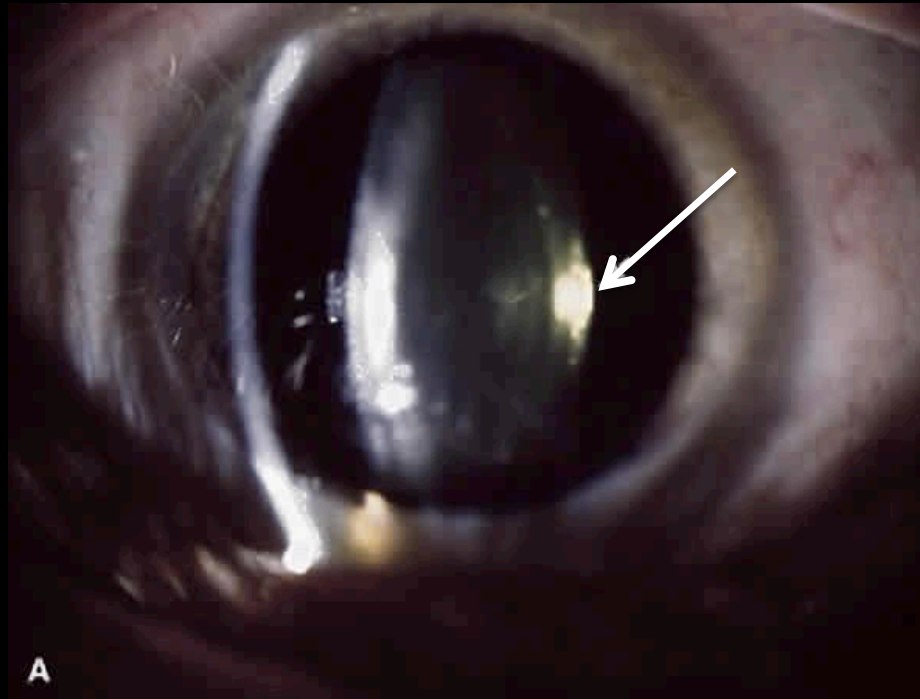




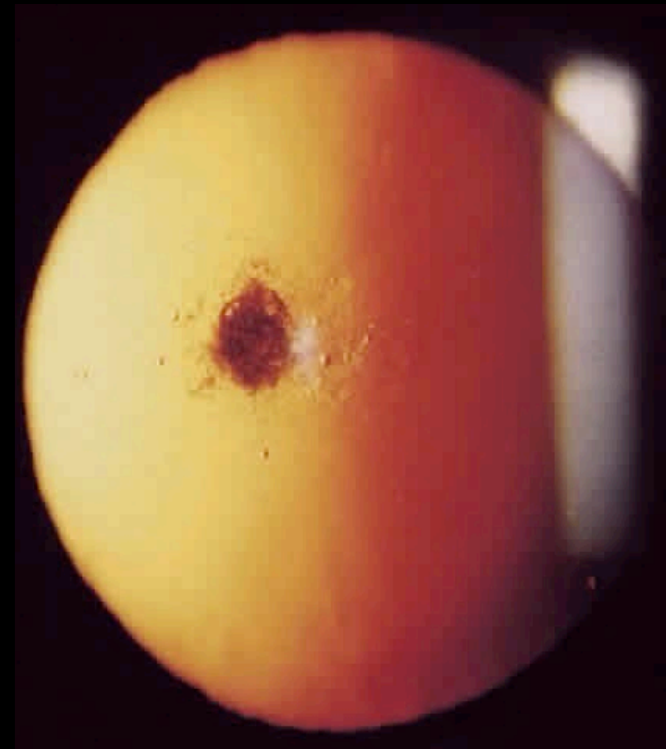
Spaltlichteinfall von links und rechts



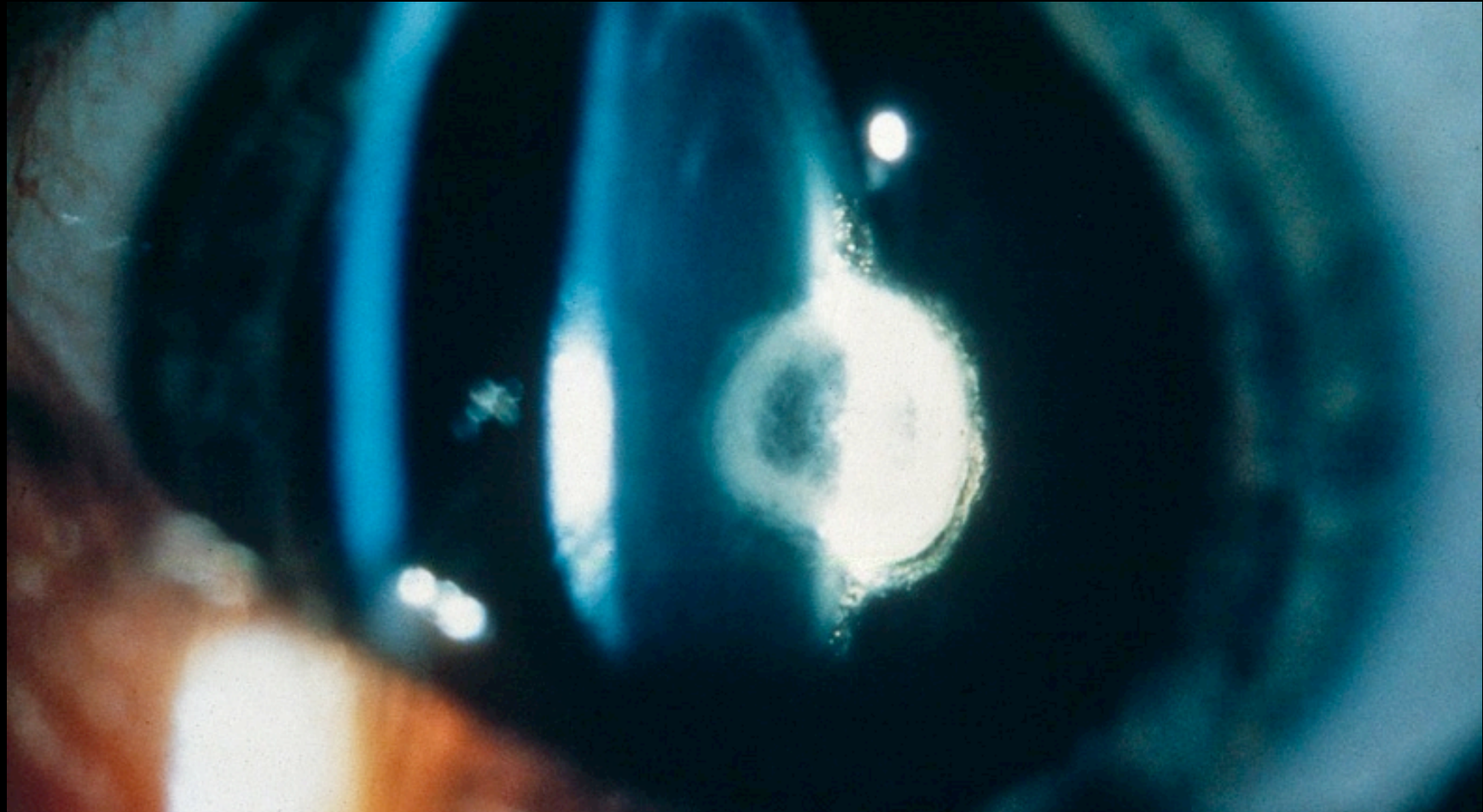
Spaltlampe



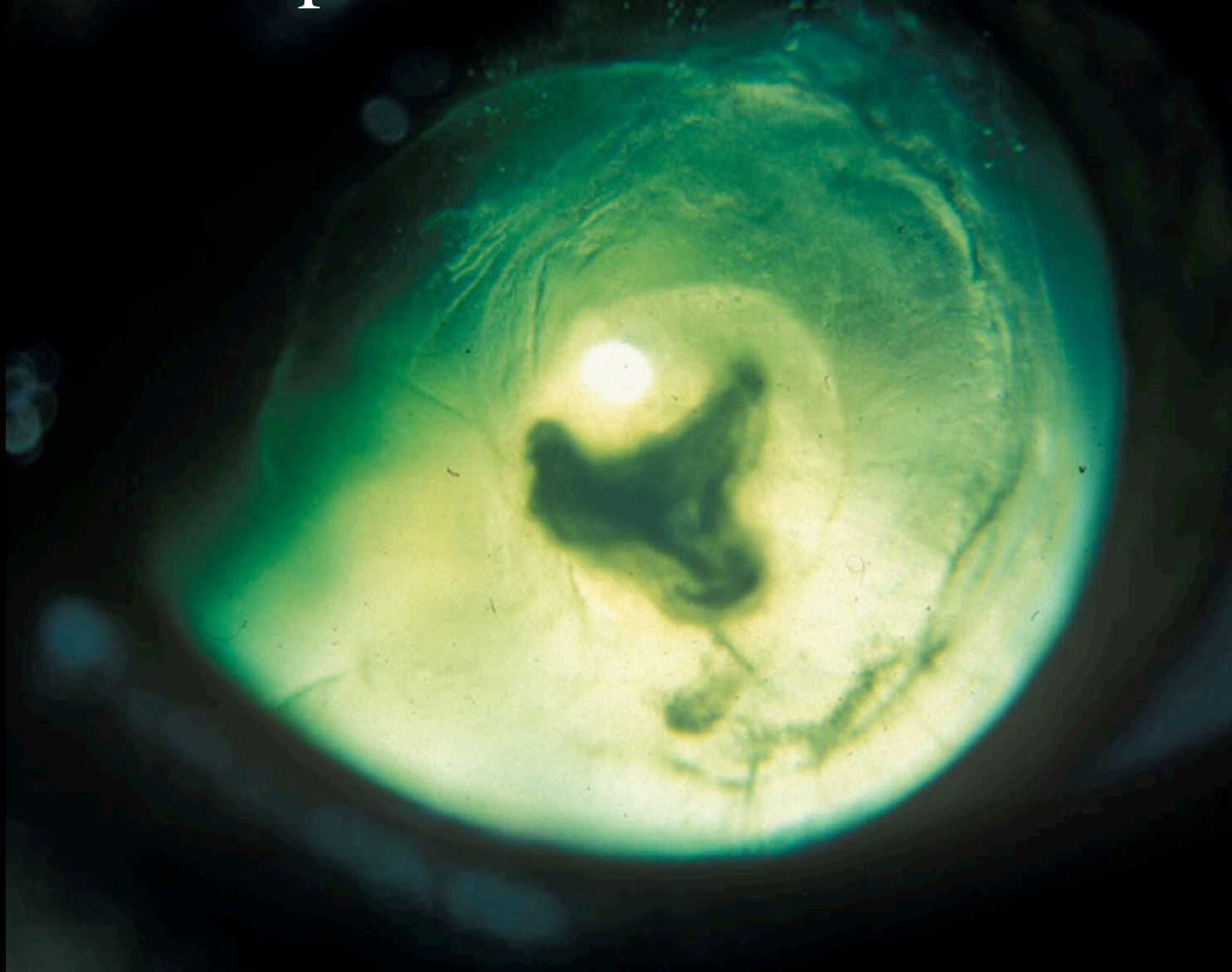
Retro-Illumination



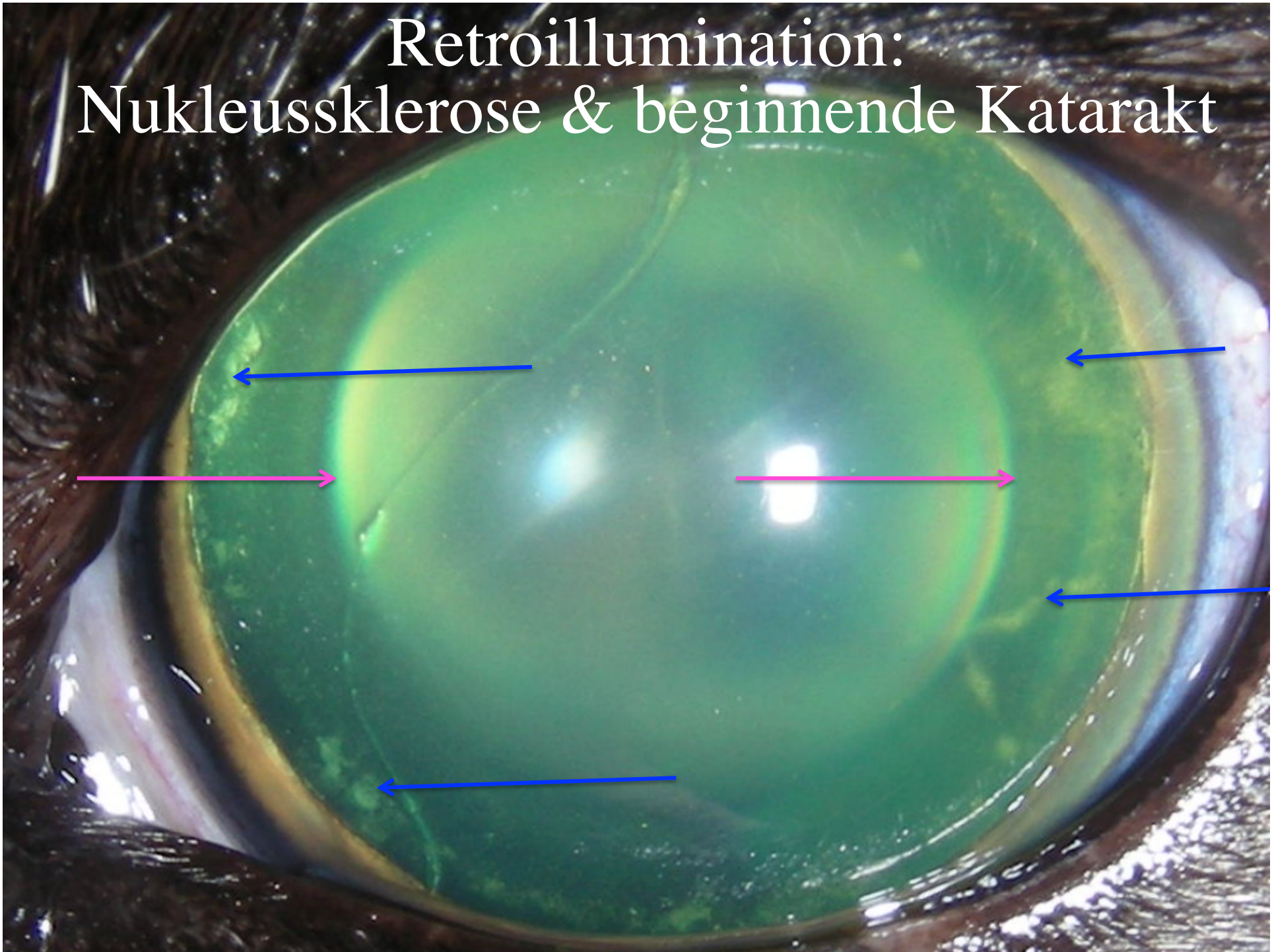
Posterior polare Katarakt



Retroillumination posterior polare & kortikale Katarakt



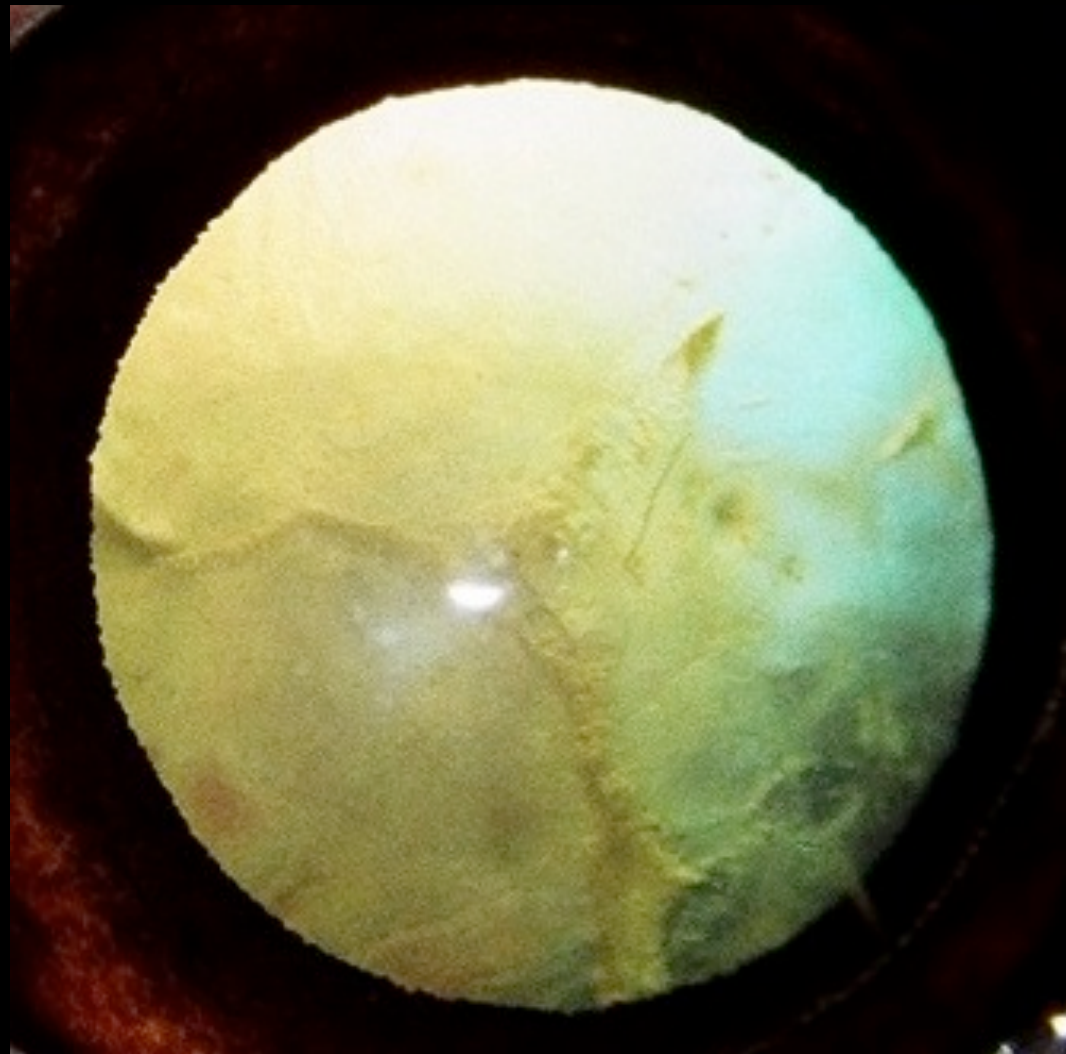
Retroillumination: Nukleussklerose & beginnende Katarakt



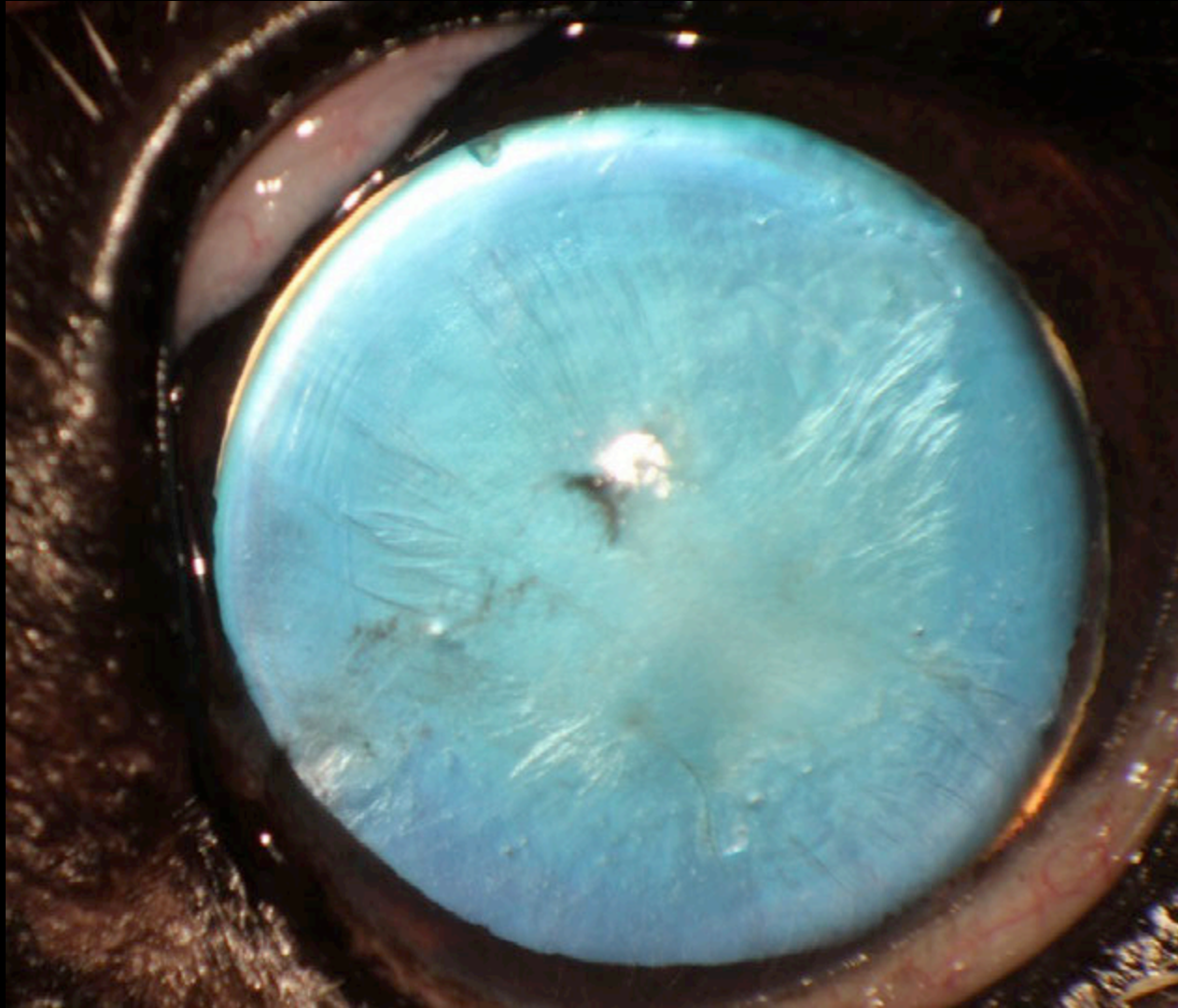
Katarakt - Retroillumination



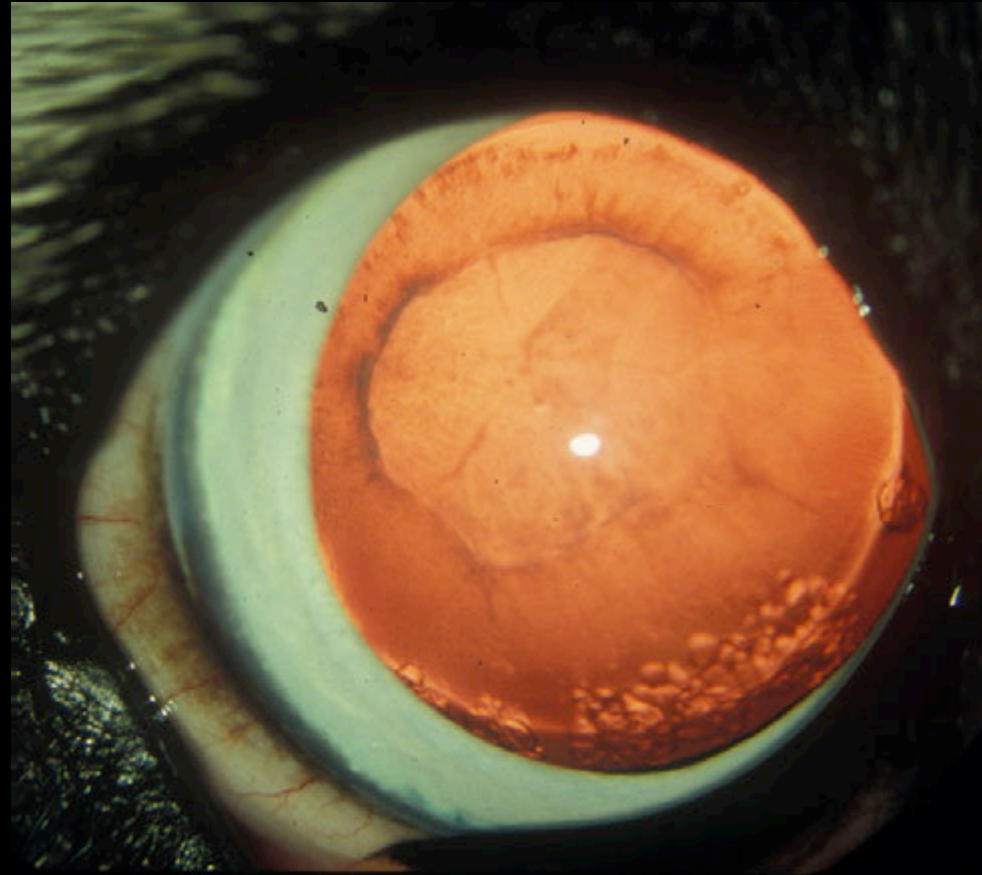
Retroillumination kortikale Katarakt



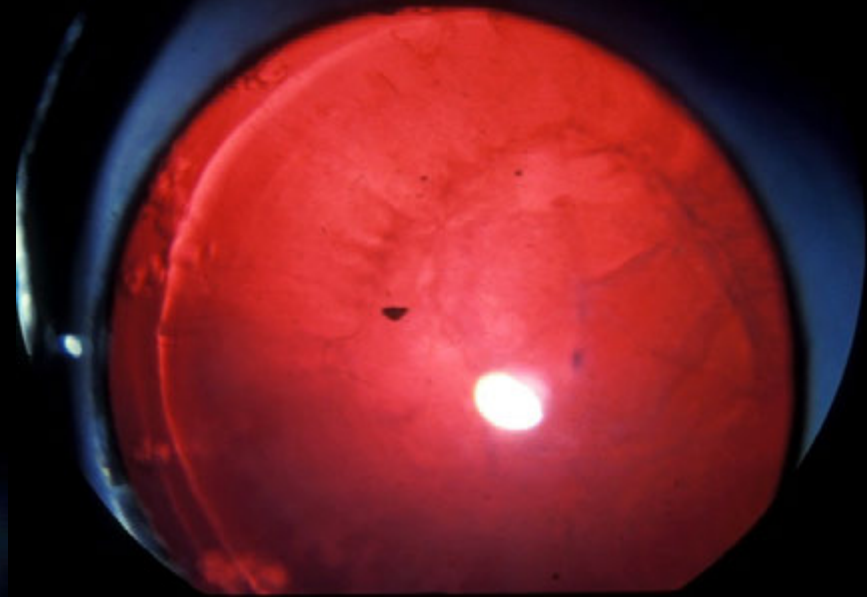
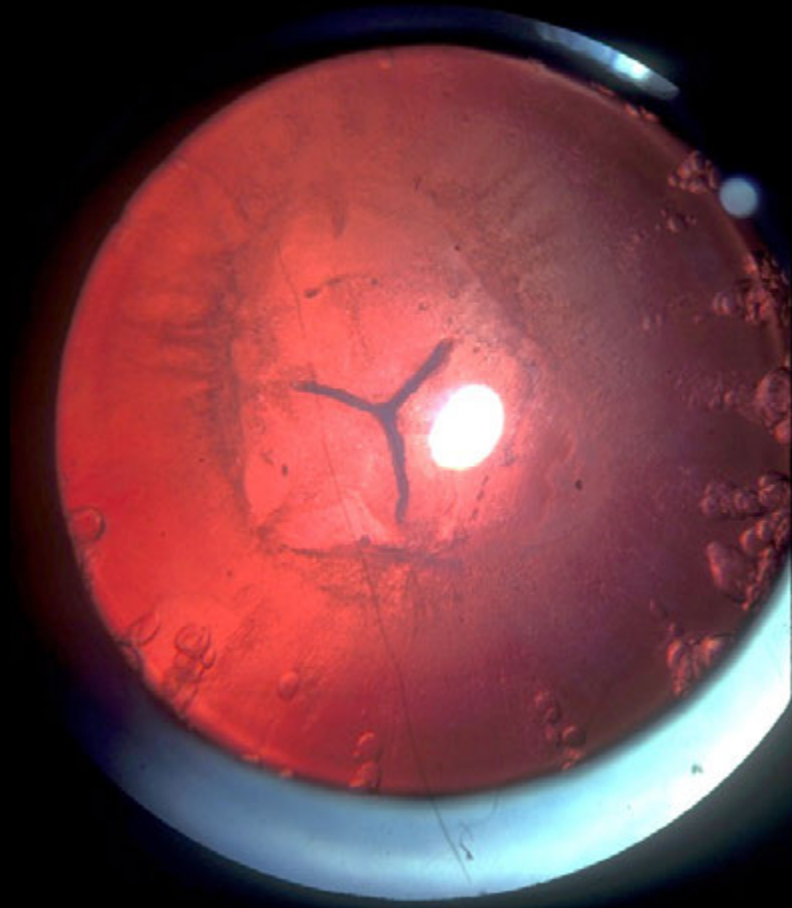
Retroillumination kortikale Katarakt

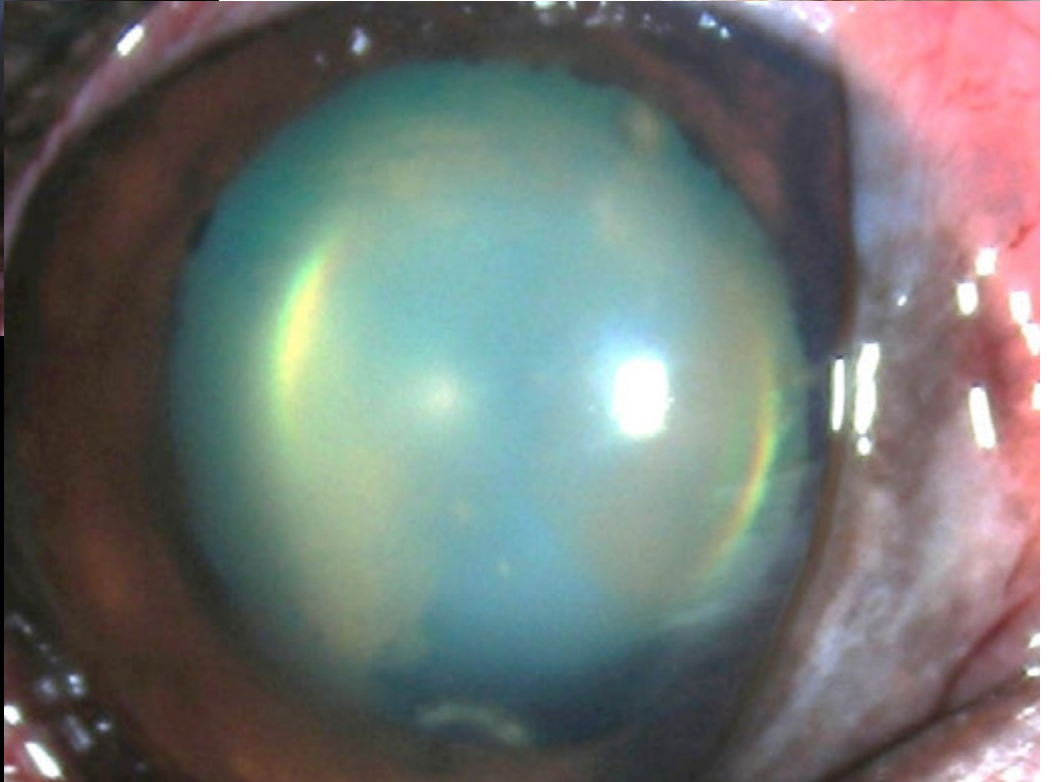
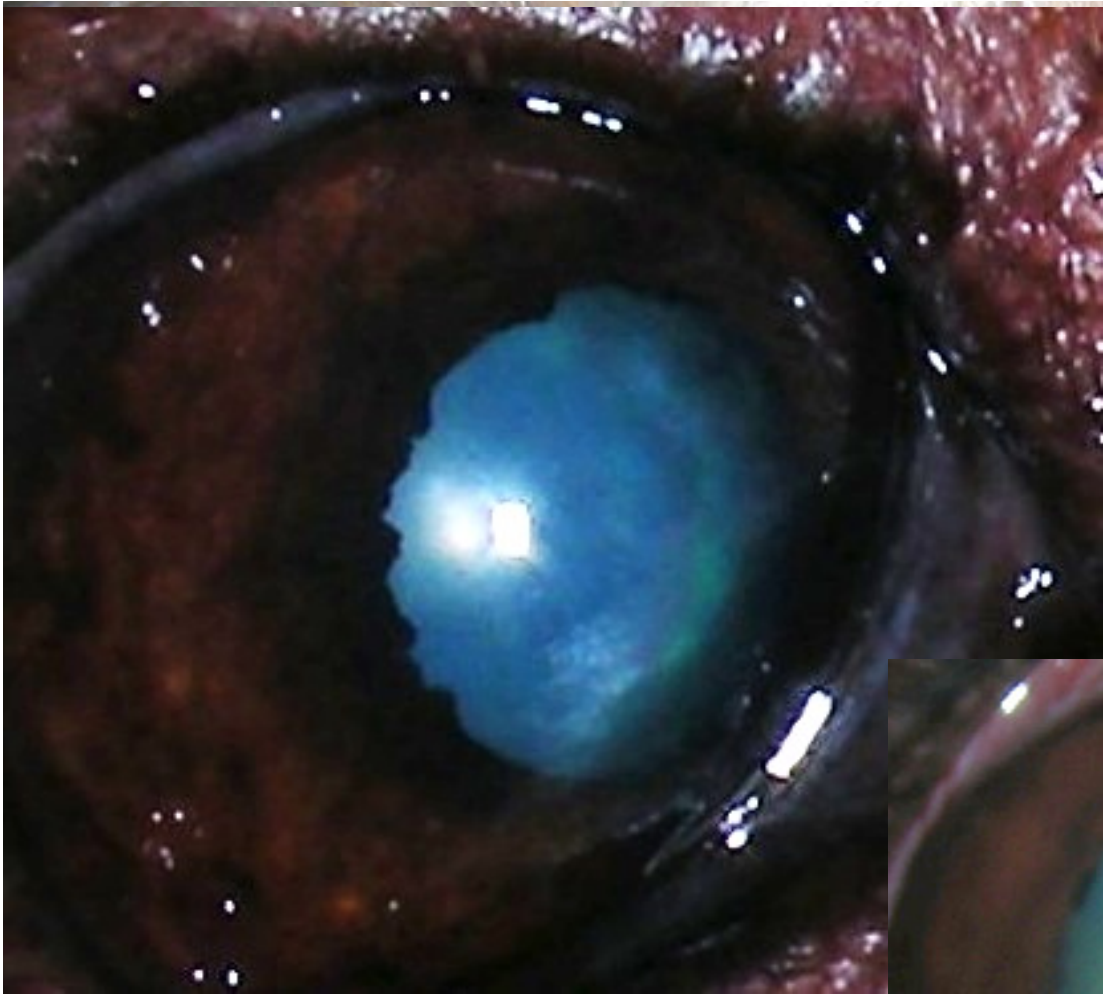


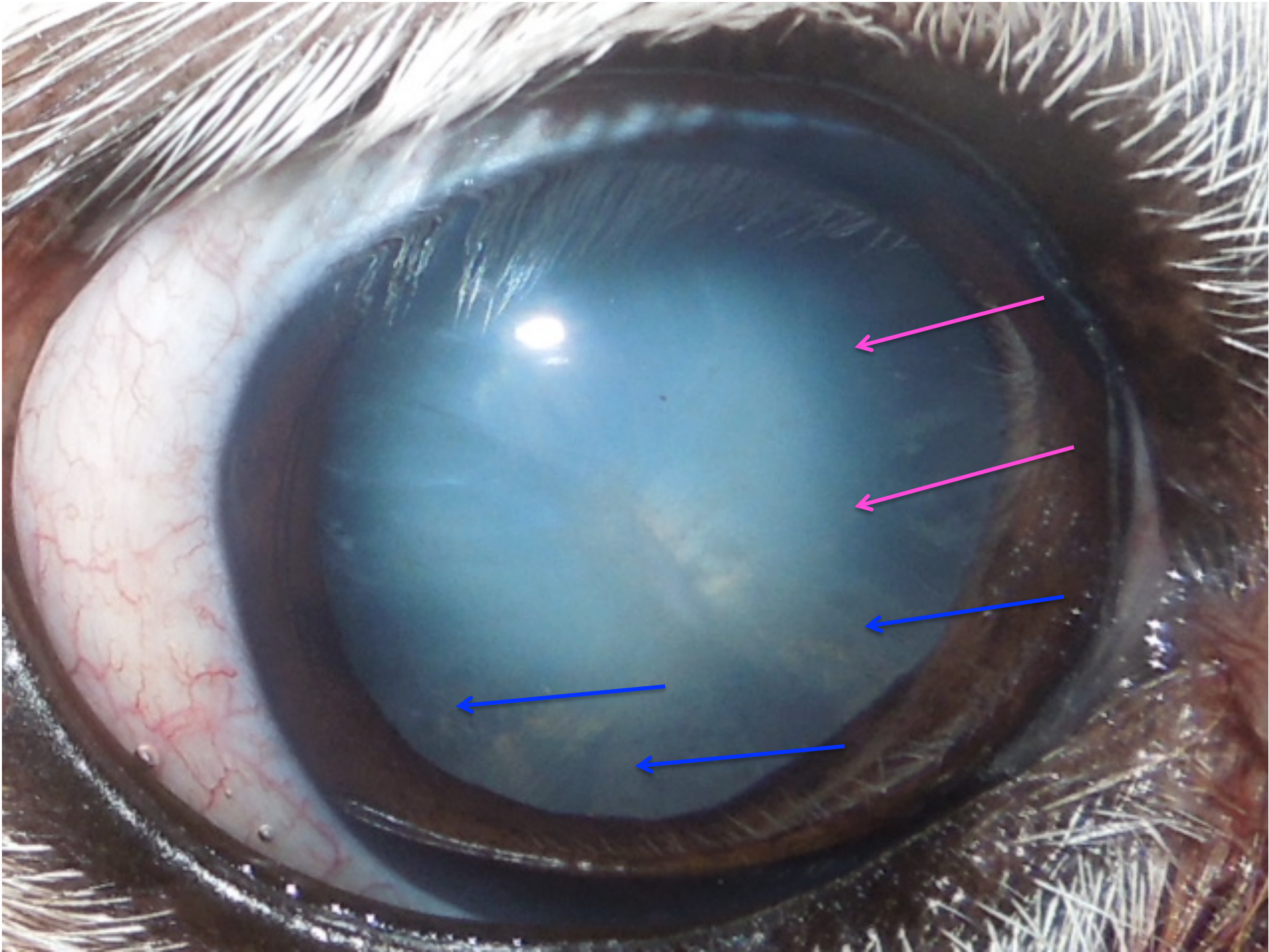
Retroillumination posterior kortikale Katarakt



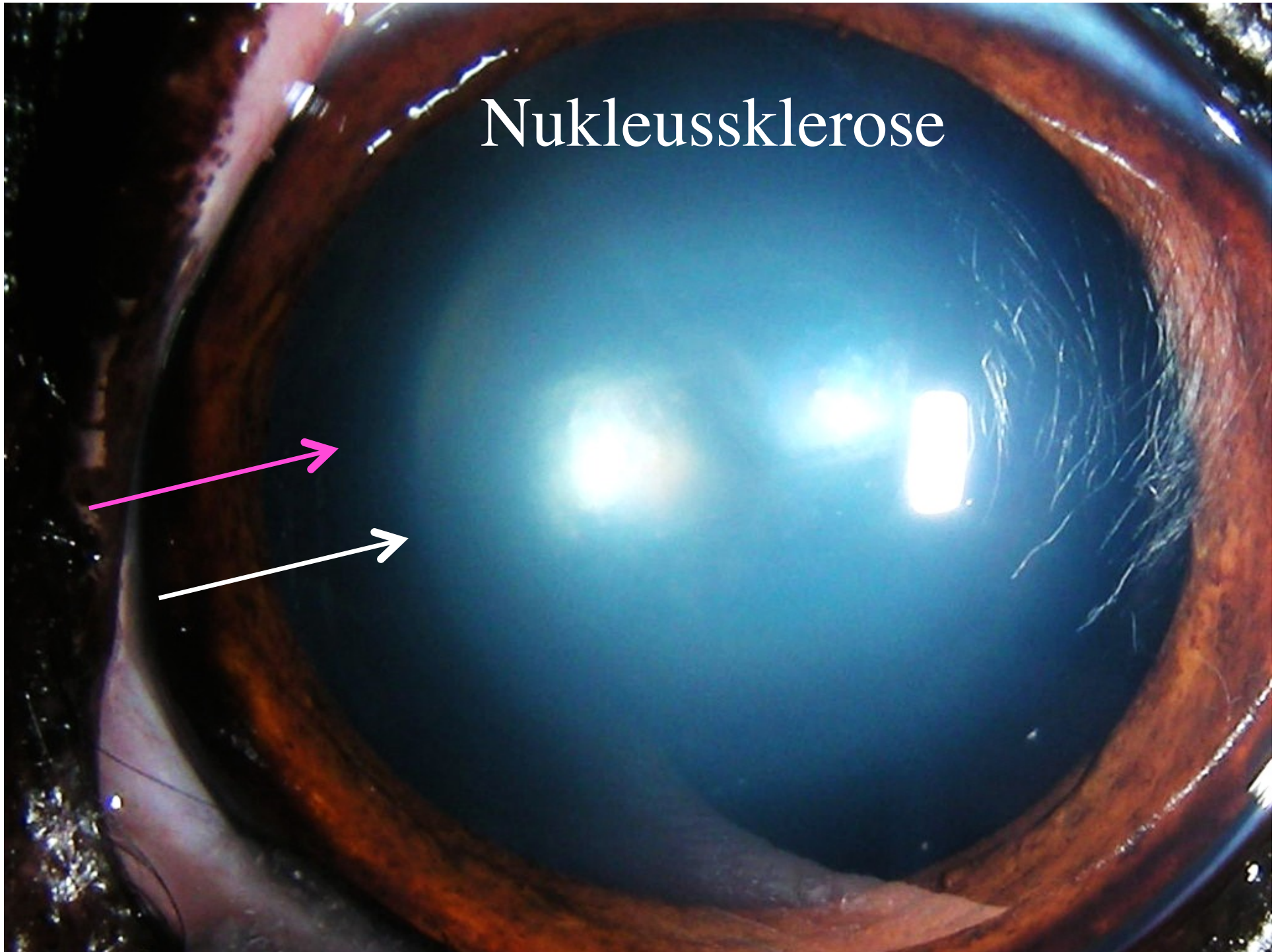
Retroillumination posterior kortikale Katarakt

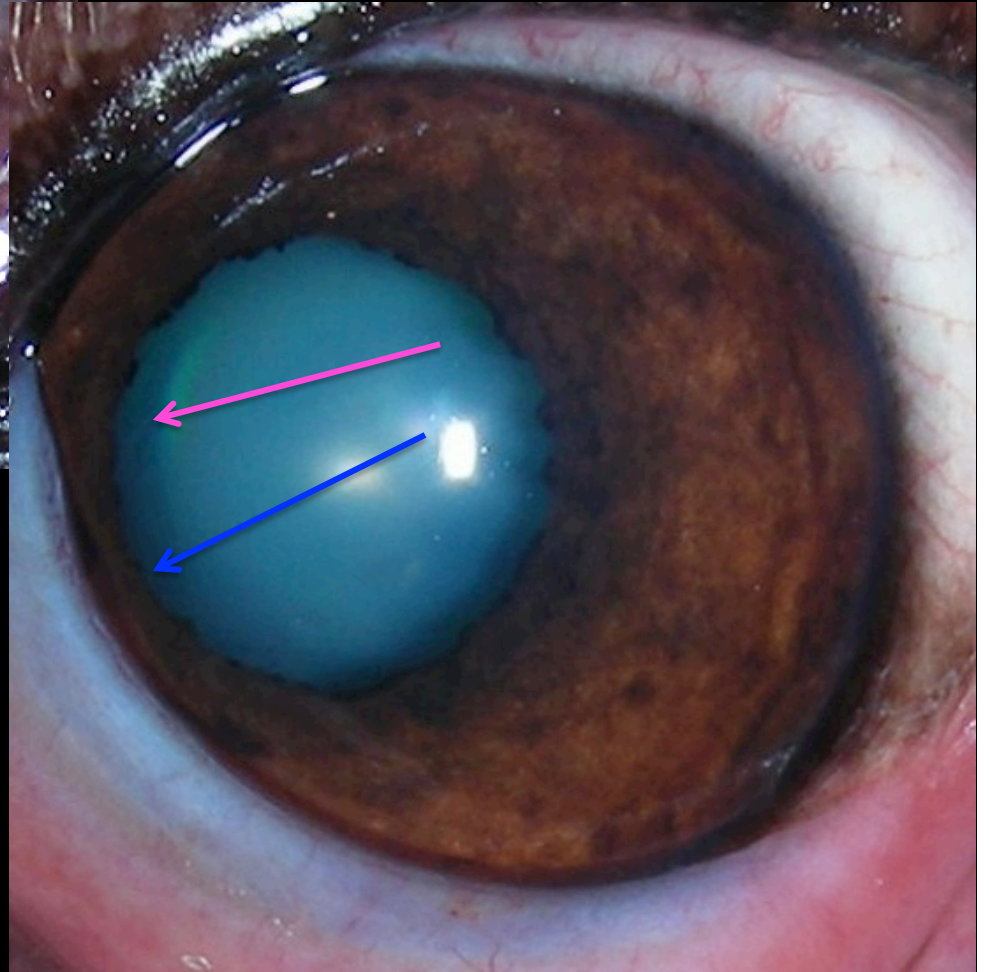
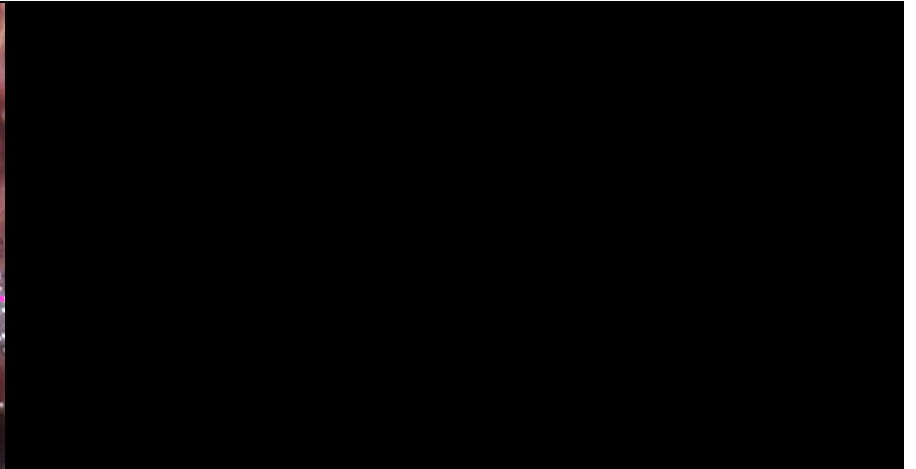
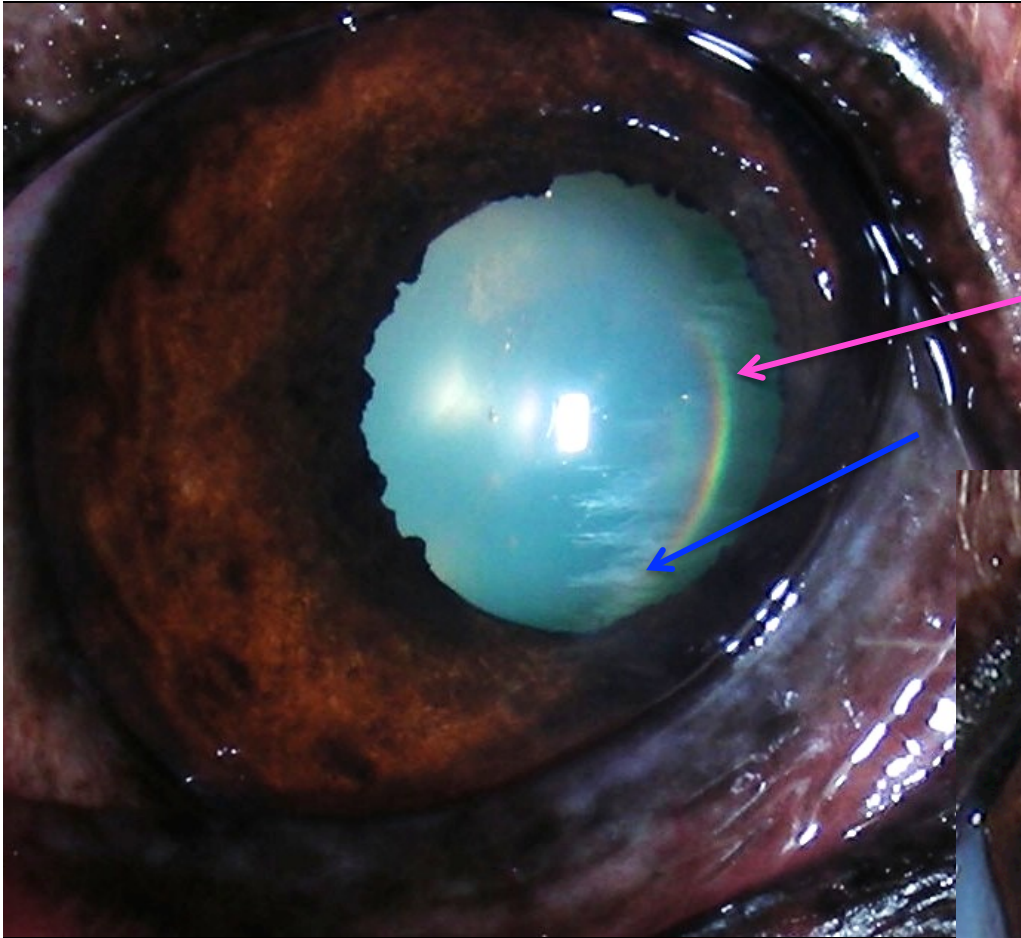






Nukleussklerose

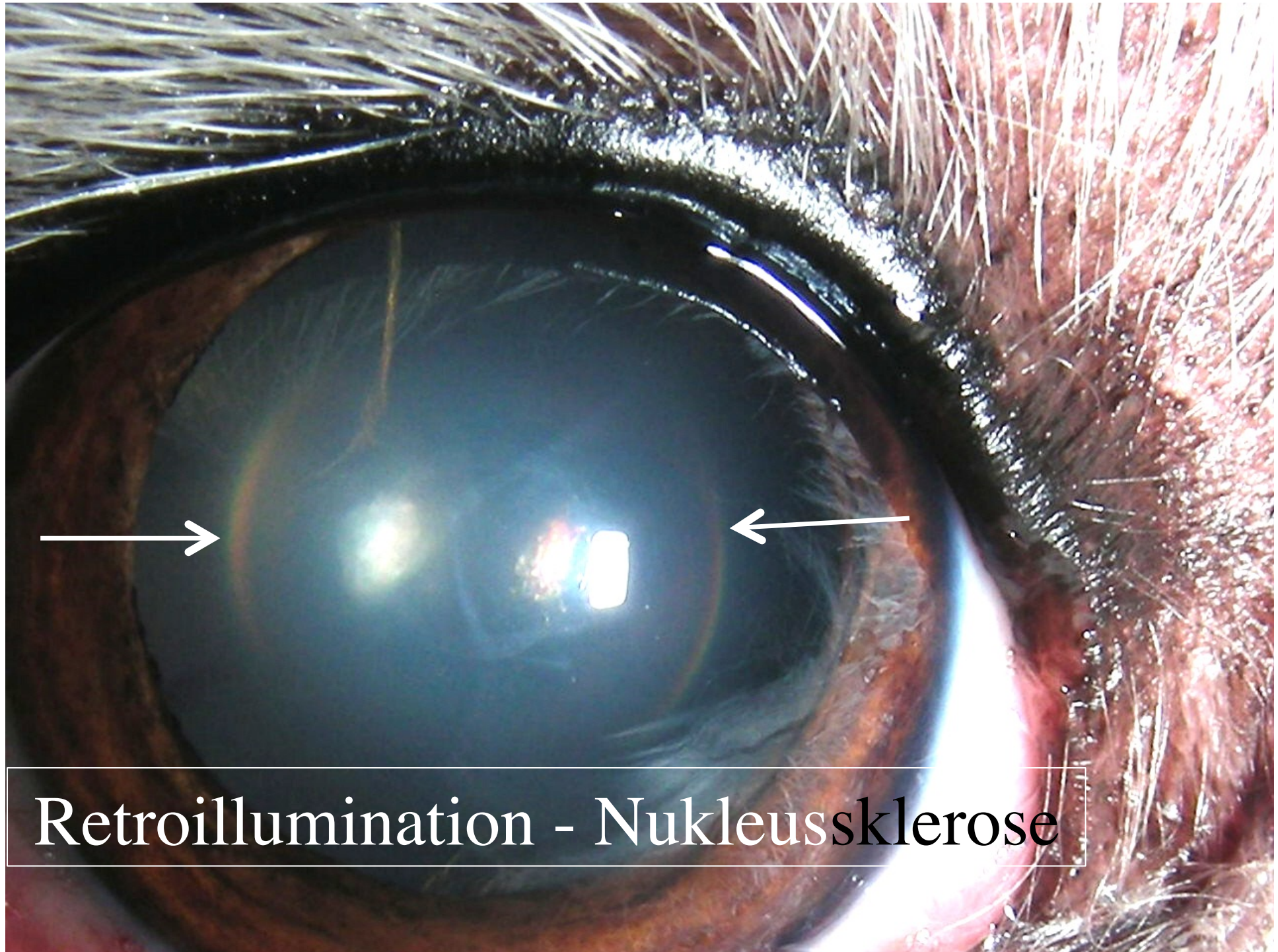




Nukleussklerose &
beginnende Katarakt



Nukleussklerose oder Katarakt???



Retroillumination - Nukleussklerose

Nukleussklerose –versus Katarakt

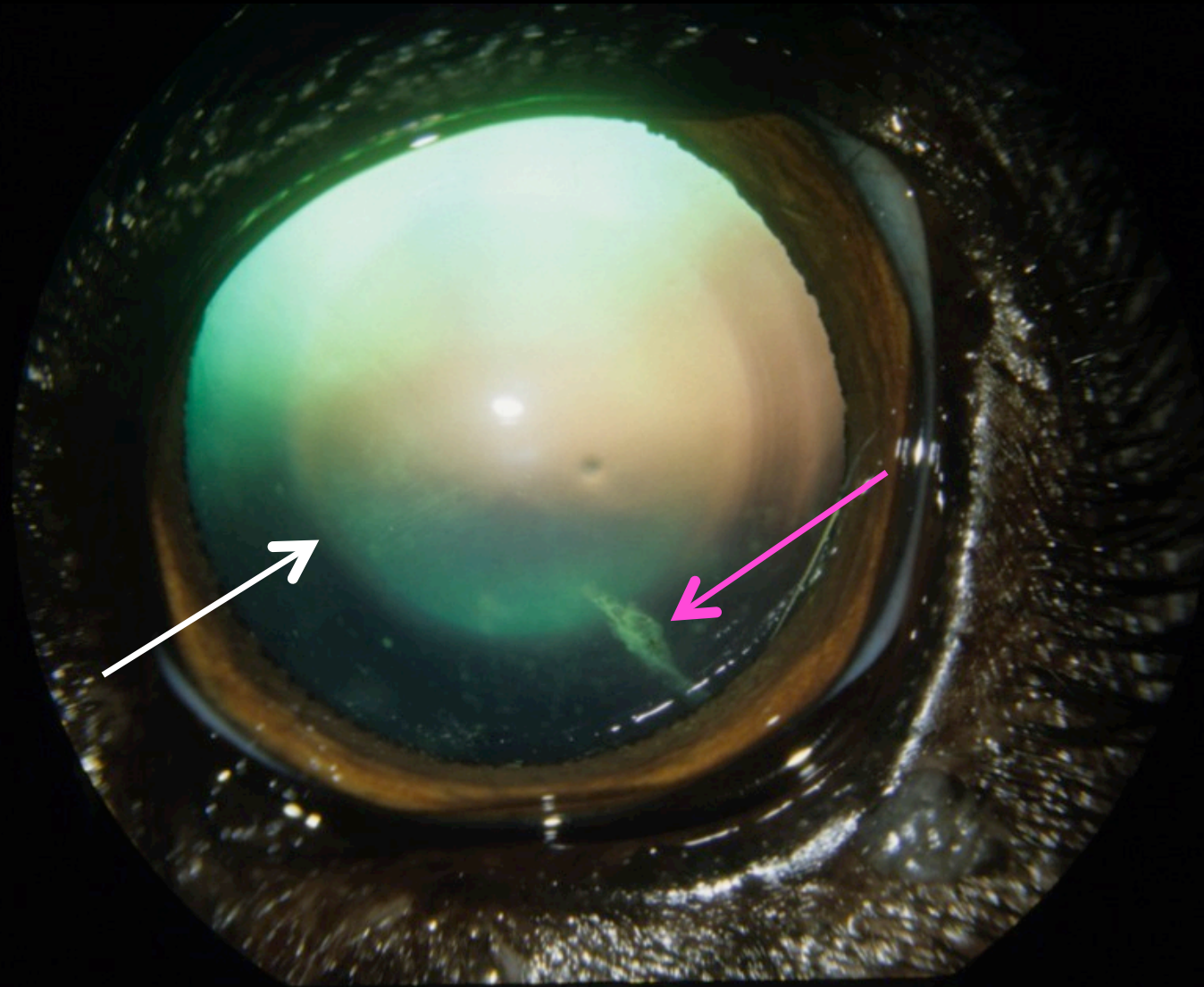
- Nukleussklerose
 - deutlich reflektierende Nukleusbegrenzung
 - transparente Kortex
- Katarakt
 - kortikale Trübung



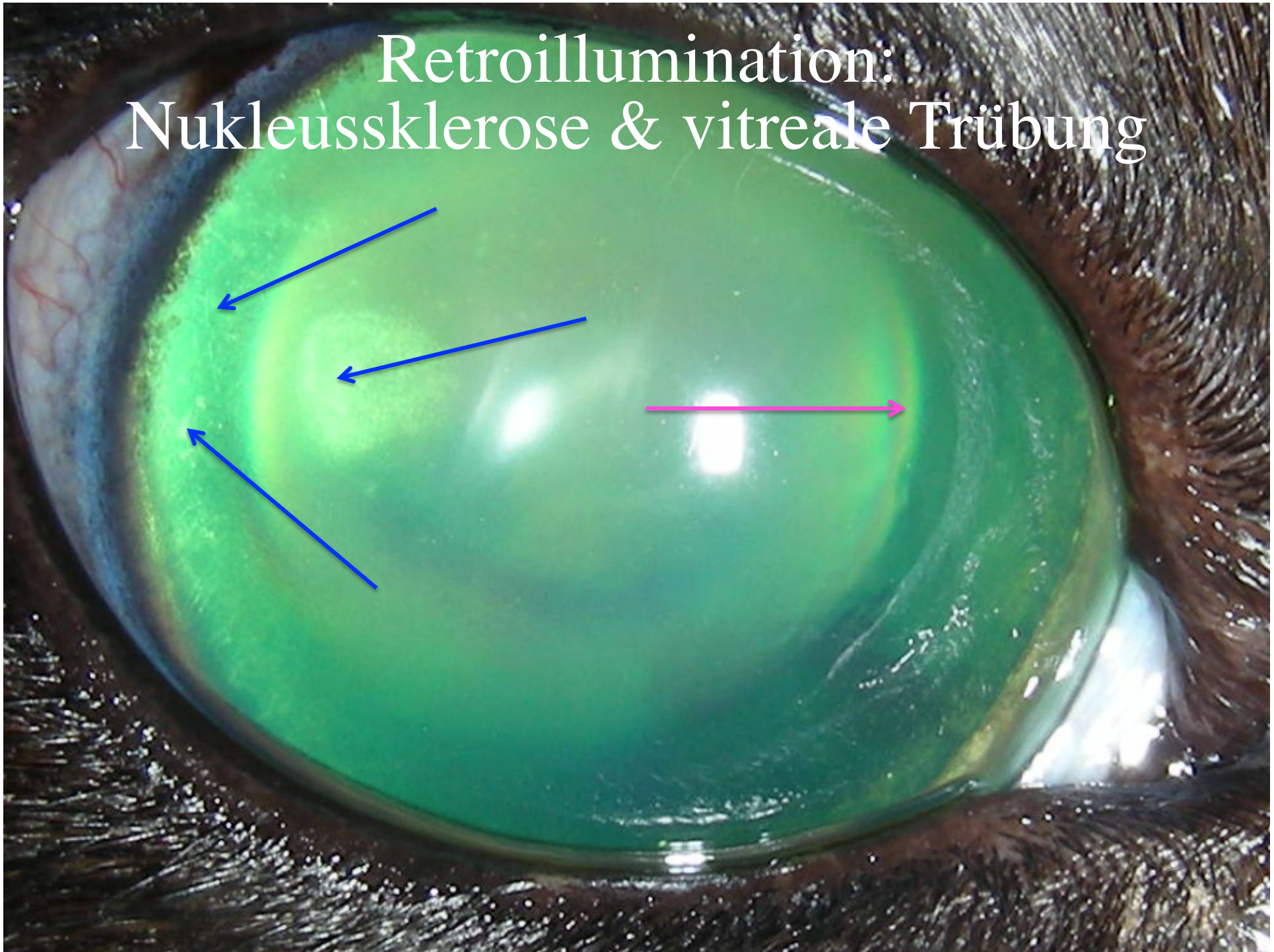
senile Katarakt

- initial meist radspeichenartige kortikale Trübung
- langsam progressiv
- regelmässige Kontrolluntersuchungen (6-12 Mo)

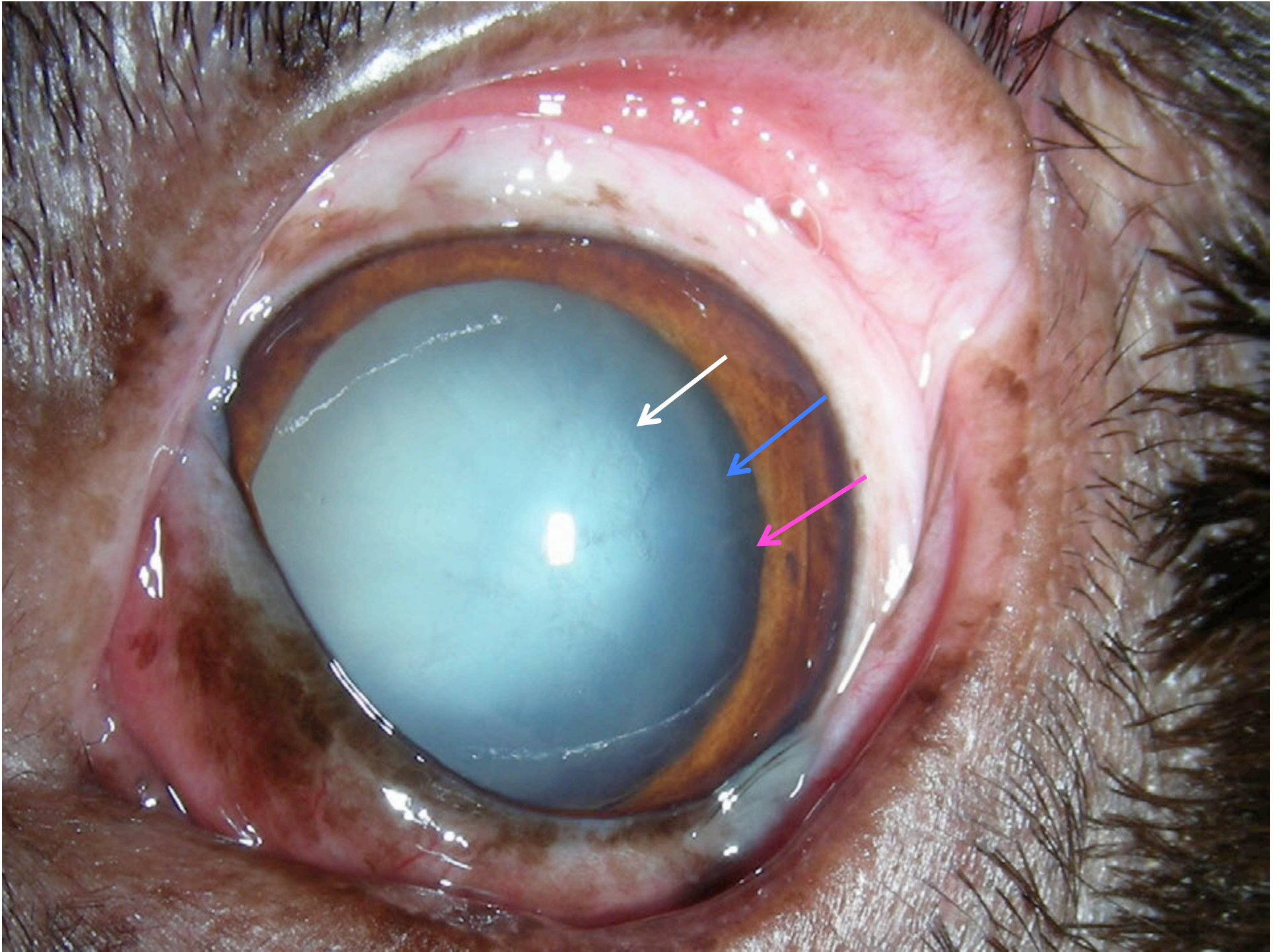
Nukleussklerose und senile Katarakt

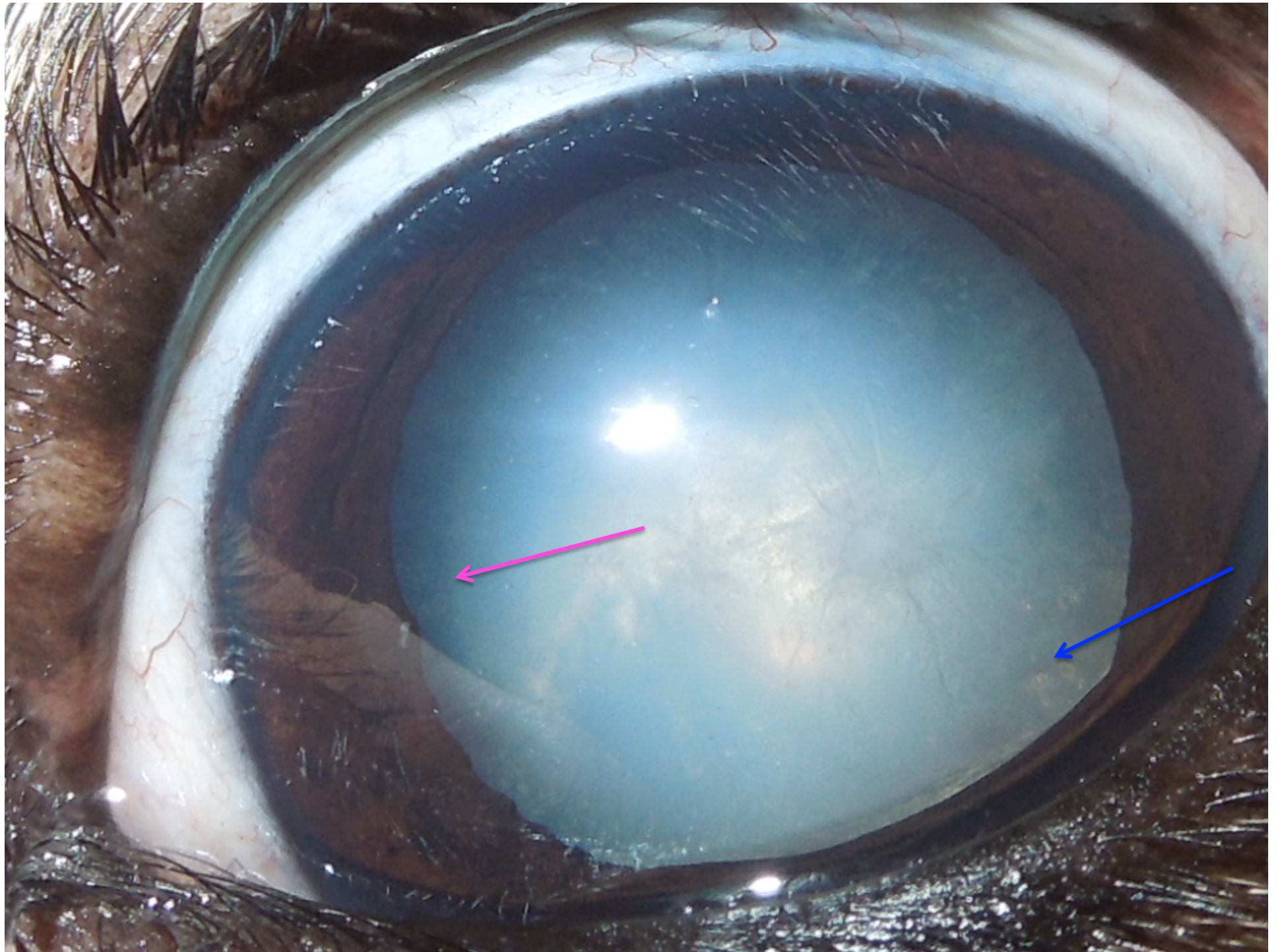


Retroillumination: Nukleussklerose & vitreale Trübung





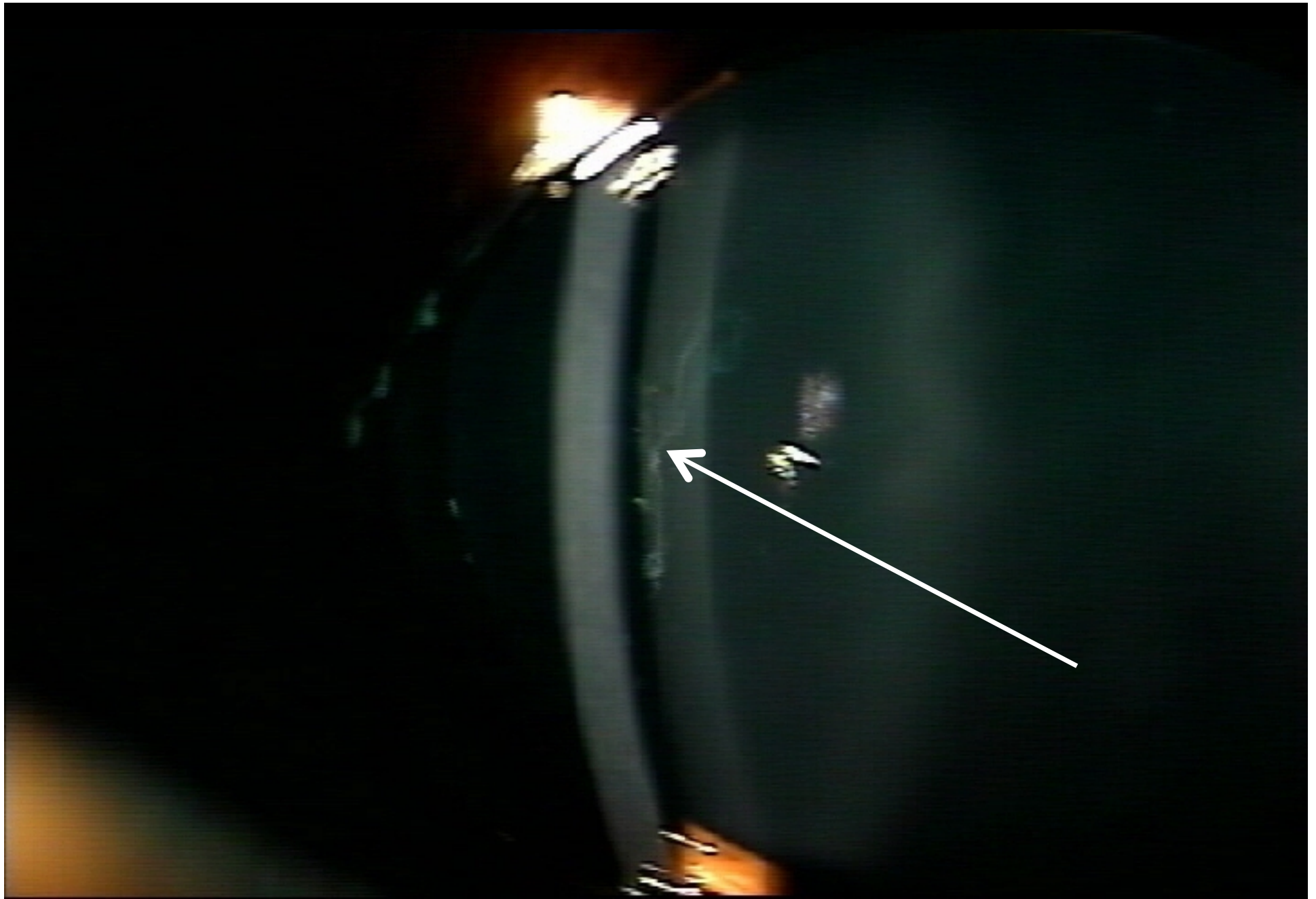




Katarakt – OP Entscheidung?

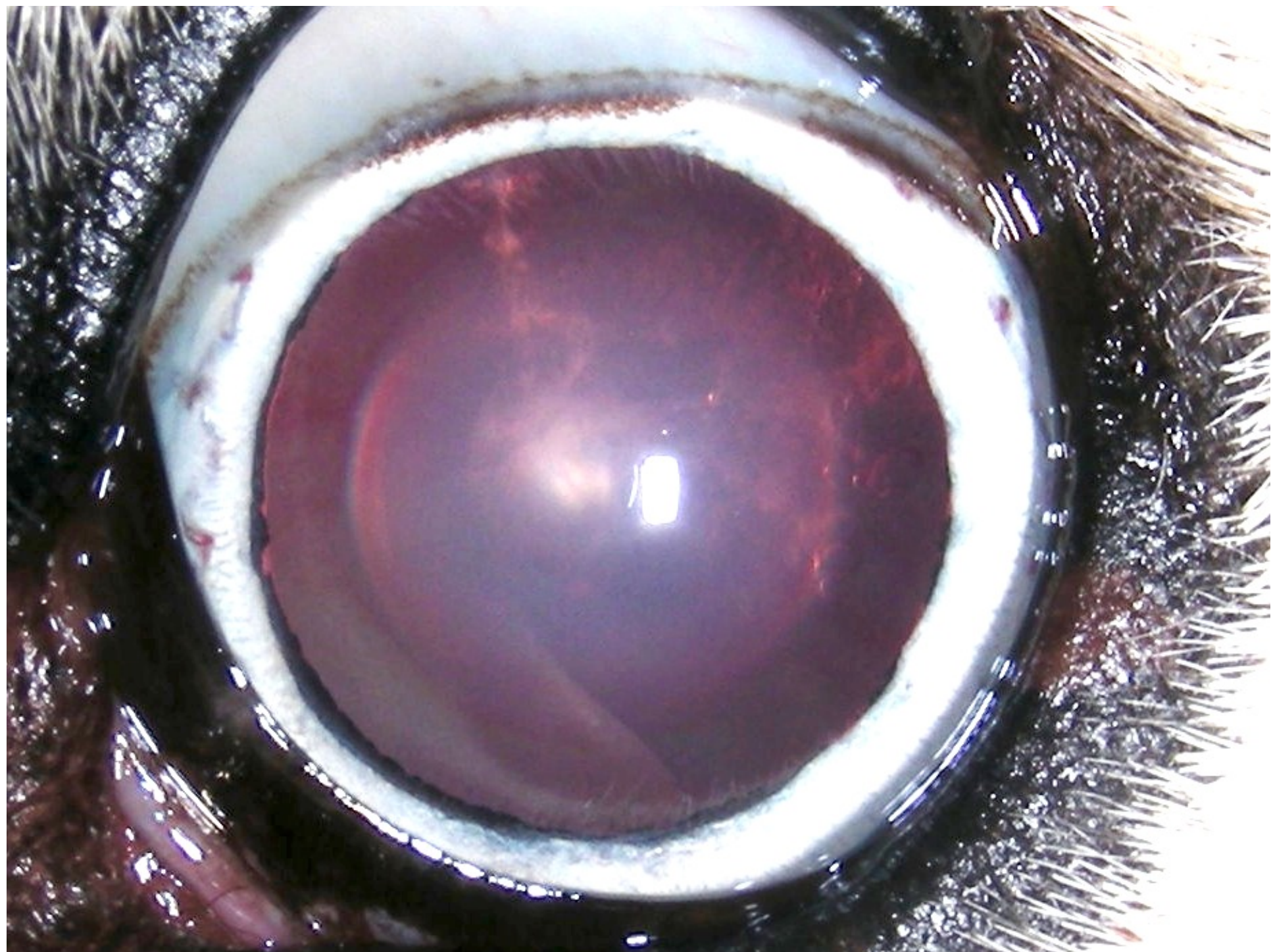
- primäre versus sekundäre Katarakt?
- Spaltlampe:
 - Kapsel? Stabilität der Linse? Glaskörper?
- Tonometrie
- Sonographie
 - hintere Kapsel
 - Glaskörper
 - Netzhautablösung?
- ElektroRetinoGramm !!! Cave: senile RA





Italienisches Windspiel

© Xaver Rösch



mature Katarakt



Sonographie



ElektroRetinoGramm - ERG



bei allen alten Hunden – senile RA !

Präoperative Untersuchung

- orale Untersuchung
- Allgemeinuntersuchung
 - Diabetes?
 - Cushing?
 - Koagulopathie- chronisches Leberproblem?
 - Atopie? Allergie?
 - Neoplasia?
- Blut- & Urinuntersuchung
- Allgemeinzustand???

“lohnt sich das noch...?”

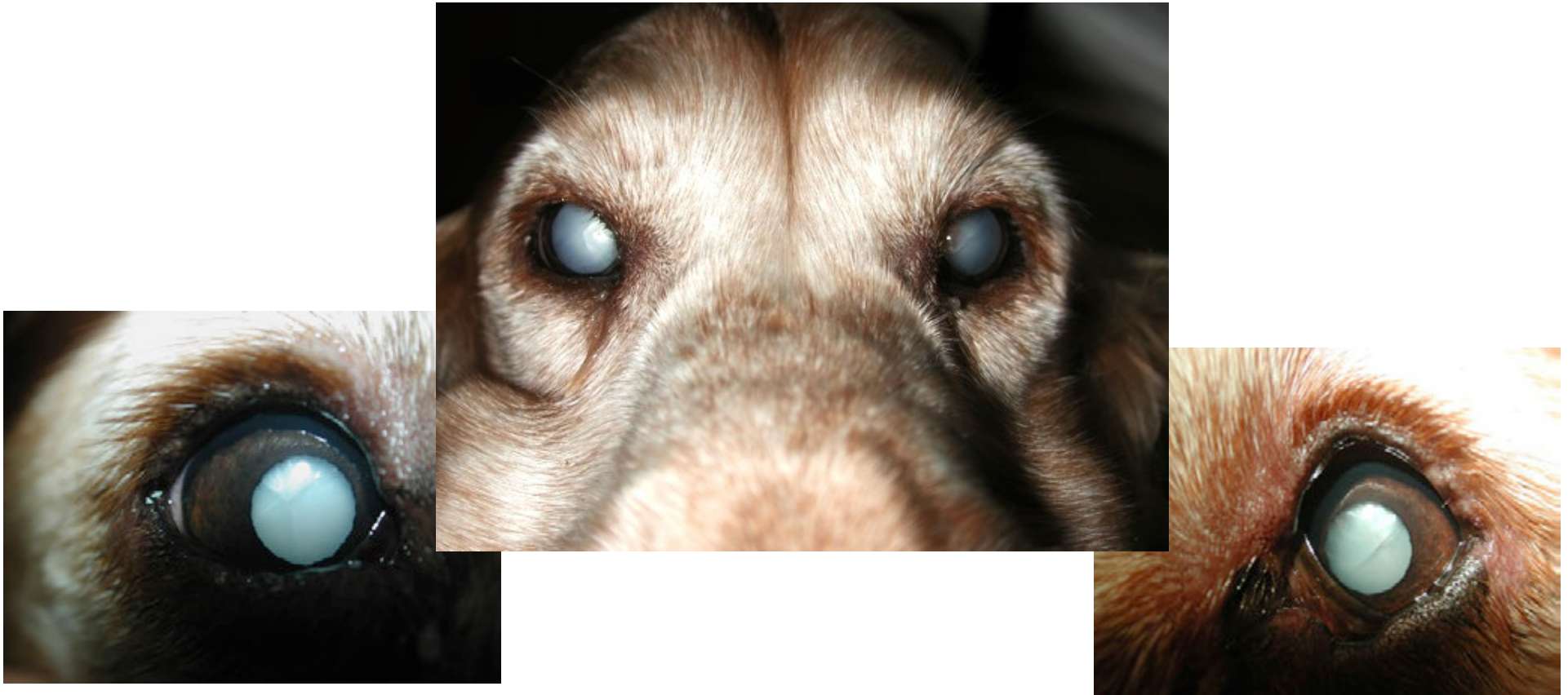


Alter ist nicht pathologisch...!

OP – wann???

wenn grundsätzlich vom Besitzer gewünscht...

- so bald als möglich - linseninduzierte Uveitis (LIU)
- präoperative medikamentelle Kontrolle der LIU



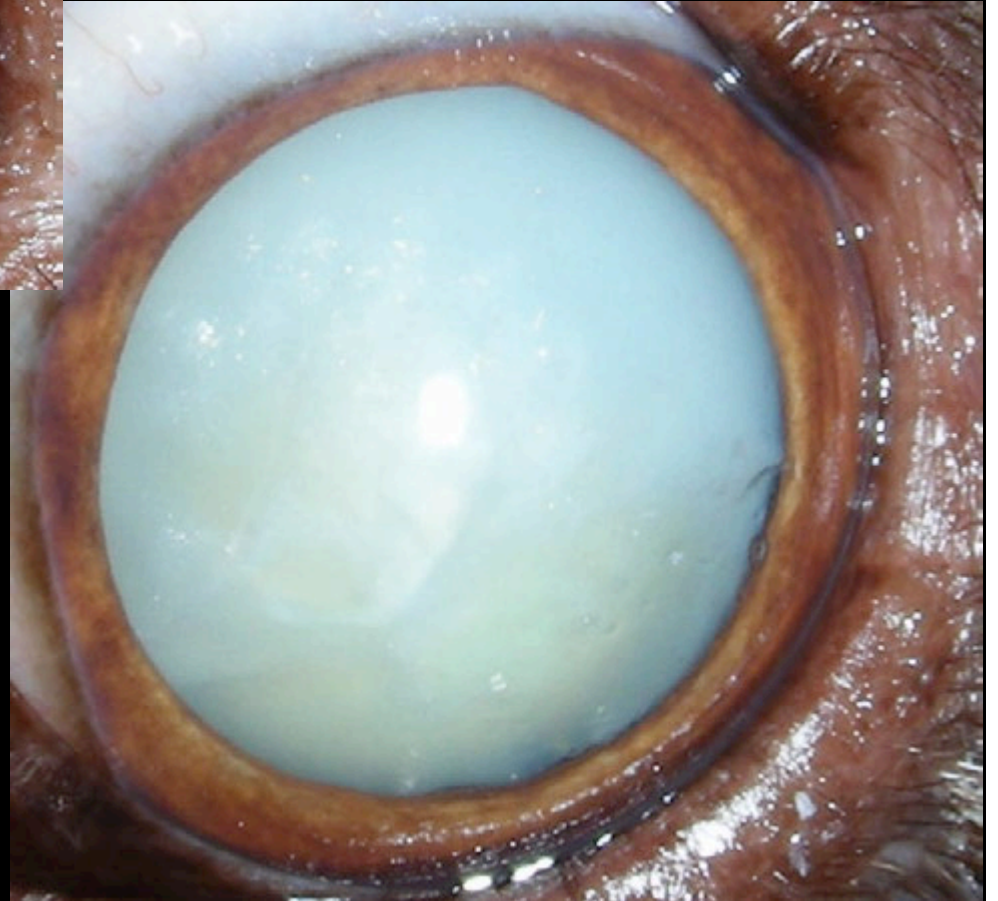
Diabetiker... OP – wann???







mature Katarakt
mit LIU



lange bestehende Katarakte

- chronische LIU
- erhöhte Komplikationsrate
 - Synechien
 - Glaukom
 - Ablatio retinae





Nukleussklerose – Katarakt

